

Reaching Conservation Goals: A Snapshot of where we are!

Jon Hutton

Protected Planet Report 2014

Tracking progress towards global targets for protected areas



A collaborative effort

Supported by:  Schweizerische Eidgenossenschaft
Confédération suisse
Confederazione Svizzera
Confederaziun svizra

Swiss Confederation

Federal Office for the Environment FOEN

In collaboration with:



European Environment Agency



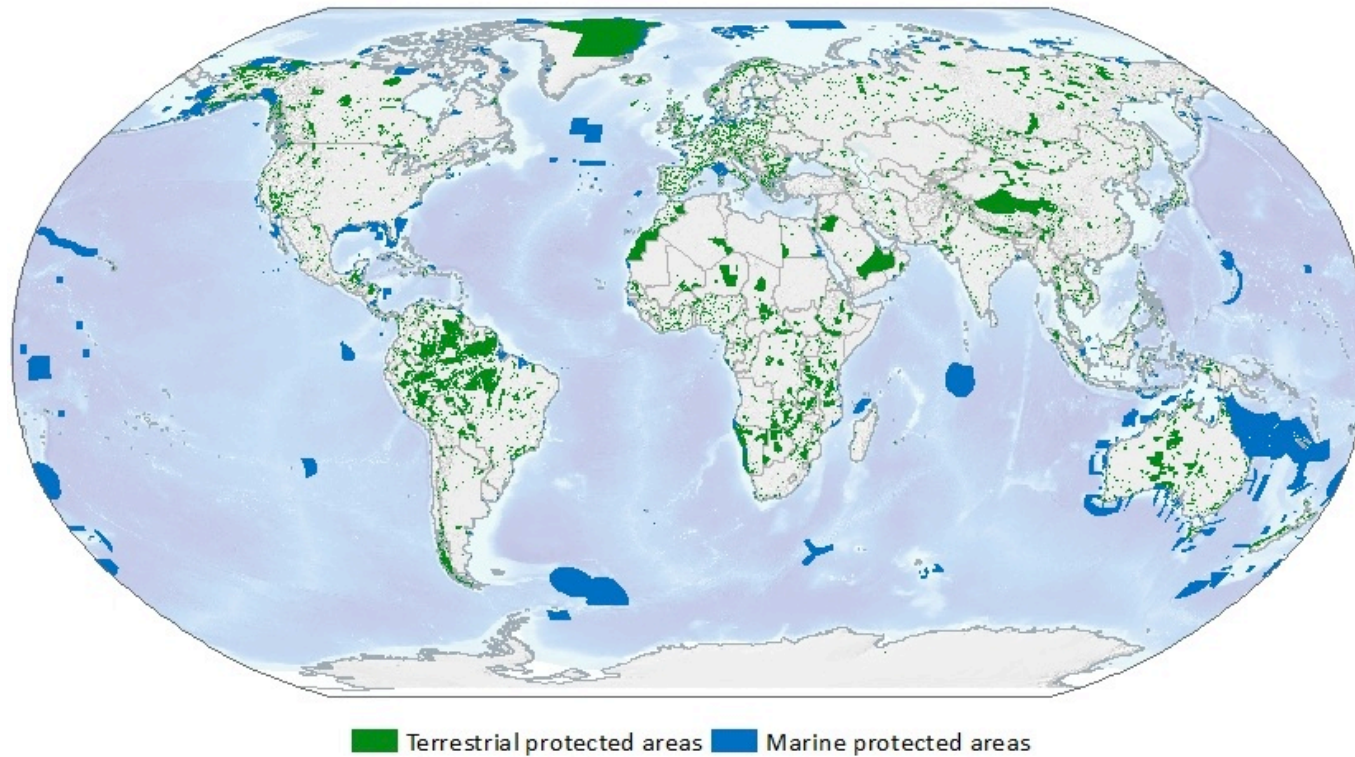
Aichi Target 11



By 2020, at least

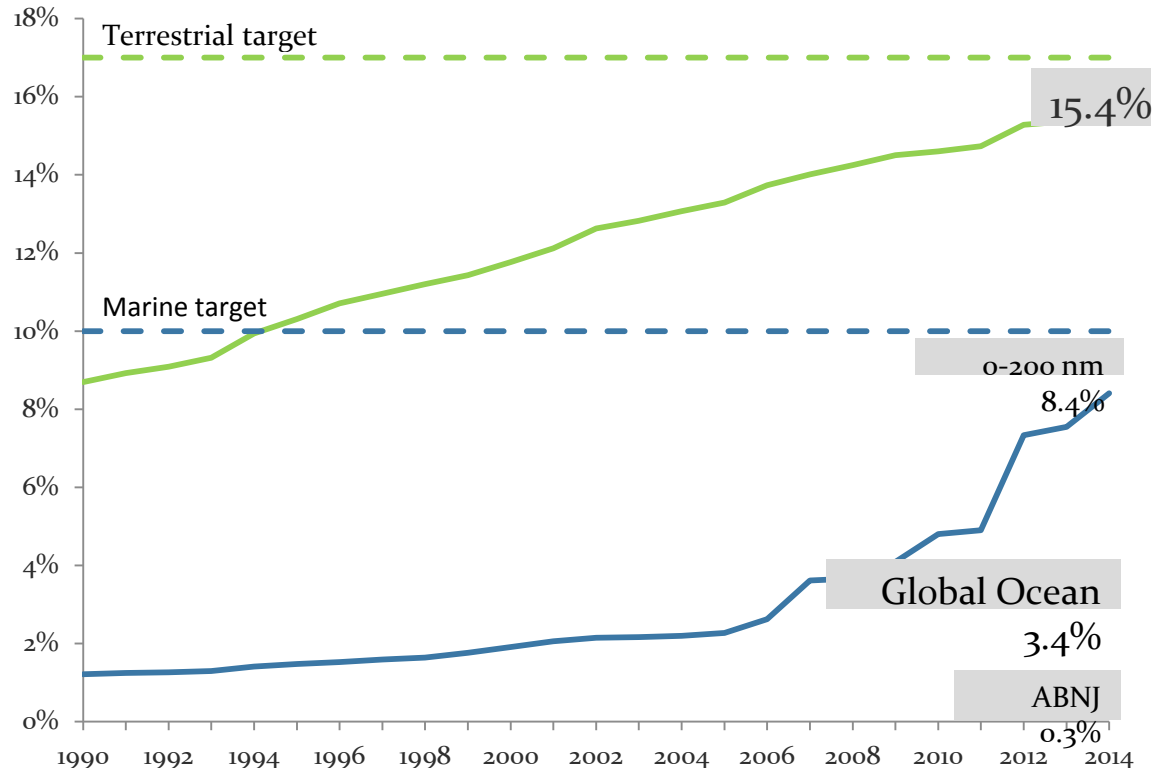
17 per cent of terrestrial and inland water areas, and
10 per cent of coastal and marine areas, especially
**areas of particular importance for biodiversity and
ecosystem services**, are conserved through
effectively and equitably managed,
ecologically representative and well connected systems
of protected areas and
other effective area-based conservation measures, and
integrated into the wider landscapes and seascapes.

Quality of the data....



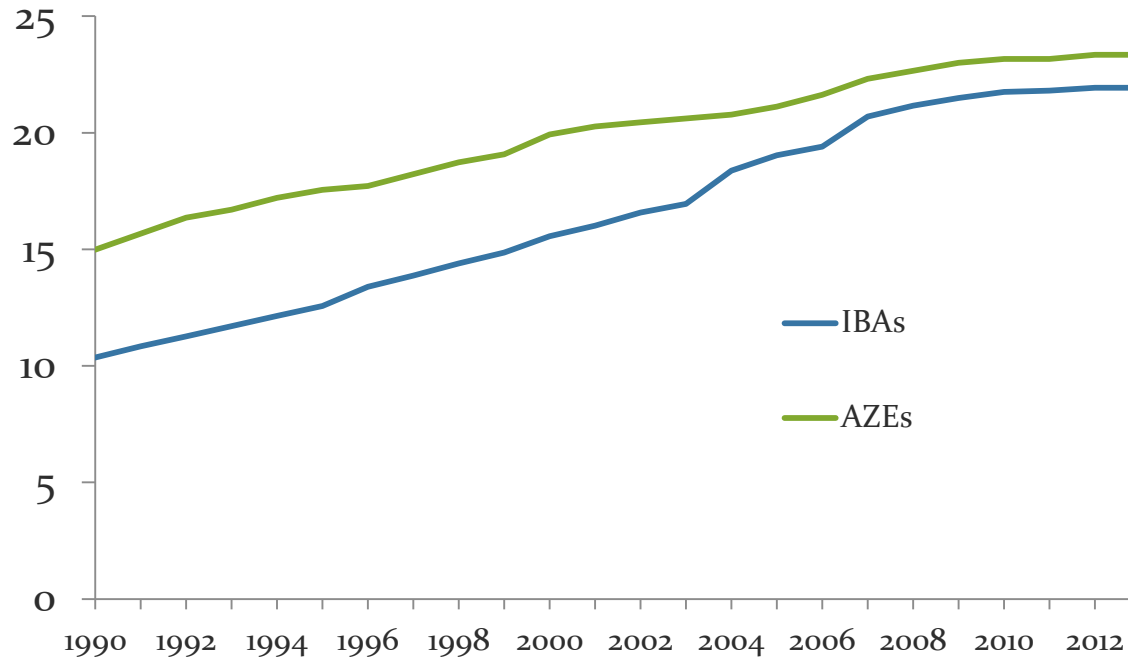
<i>Points</i>	<i>5%</i>
<i>Polygons</i>	<i>95%</i>

17 per cent of terrestrial and inland water and 10 per cent of coastal and marine



15.4% of terrestrial and inland waters within protected areas. 3.4 % of the global ocean area: 8.4% of all marine area under national jurisdiction and 10.9 % of all coastal waters, but only 0.26 % of high seas

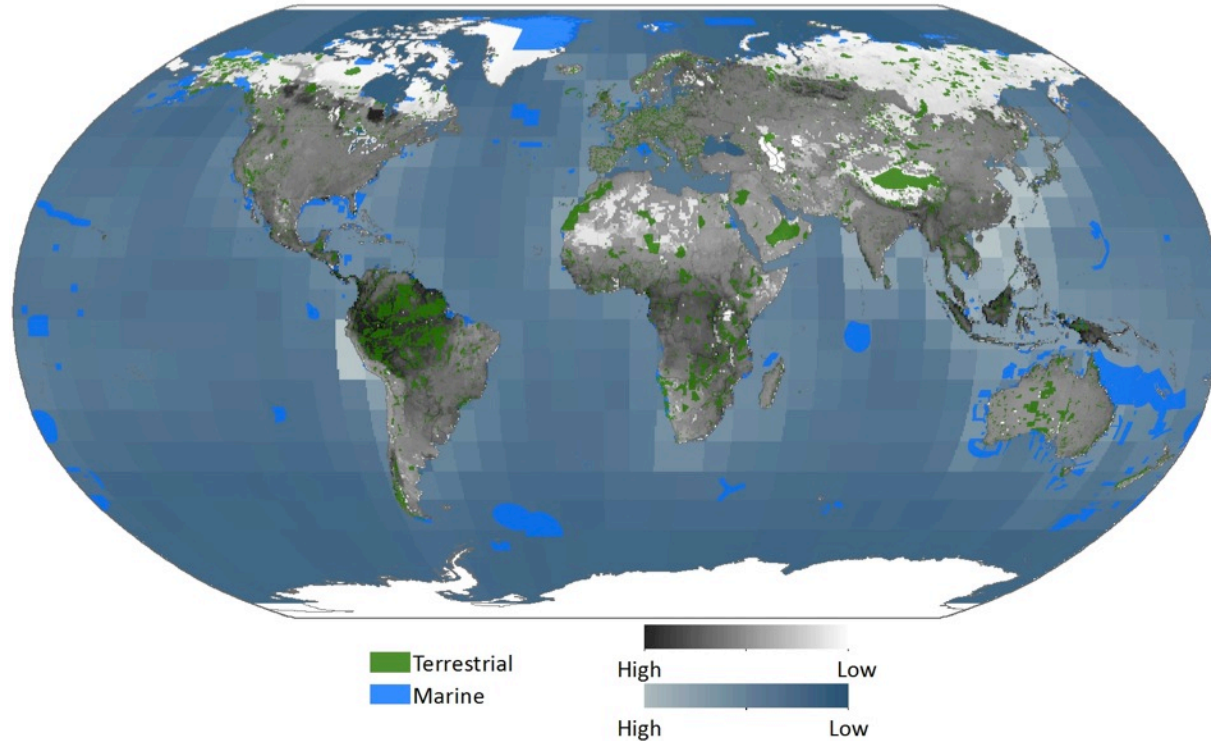
areas of particular importance for biodiversity and ecosystem services



Proportion of IBAs and AZEs completely covered by protected areas

In 2013, only 23% of IBAs and 22% of AZEs were entirely within protected areas

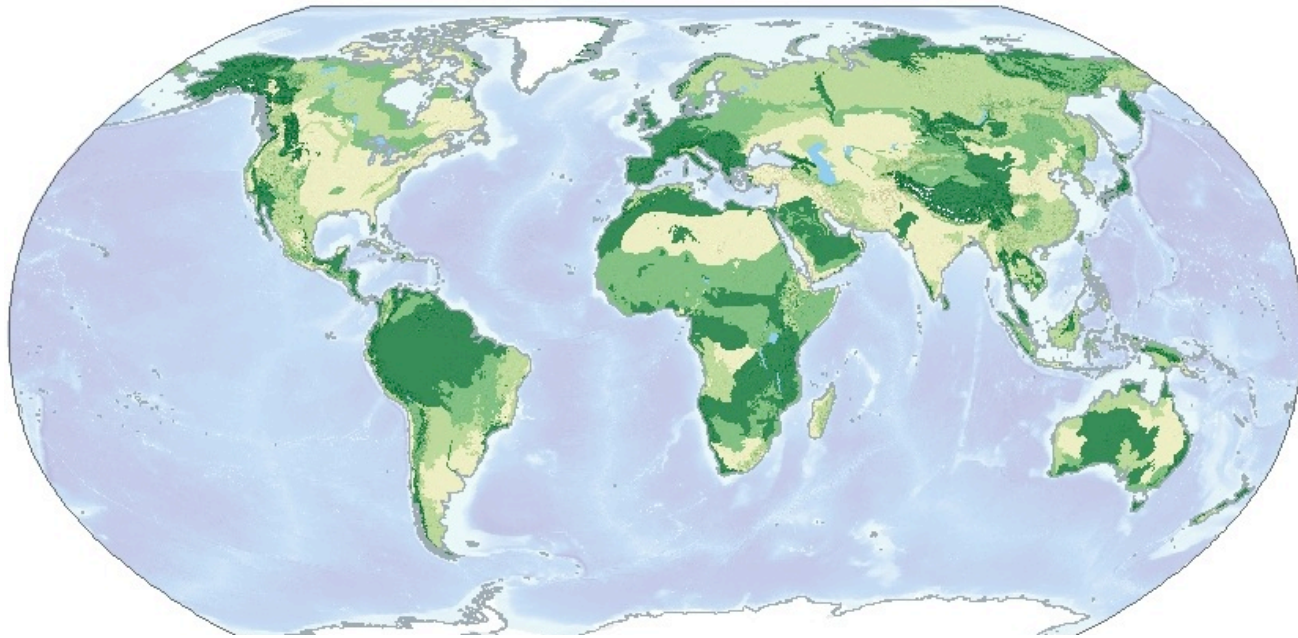
areas of particular importance for biodiversity and ecosystem services



A work in progress: protected areas within humid tropical forests contain 3.5% of global terrestrial carbon stocks

ecologically representative and well connected systems

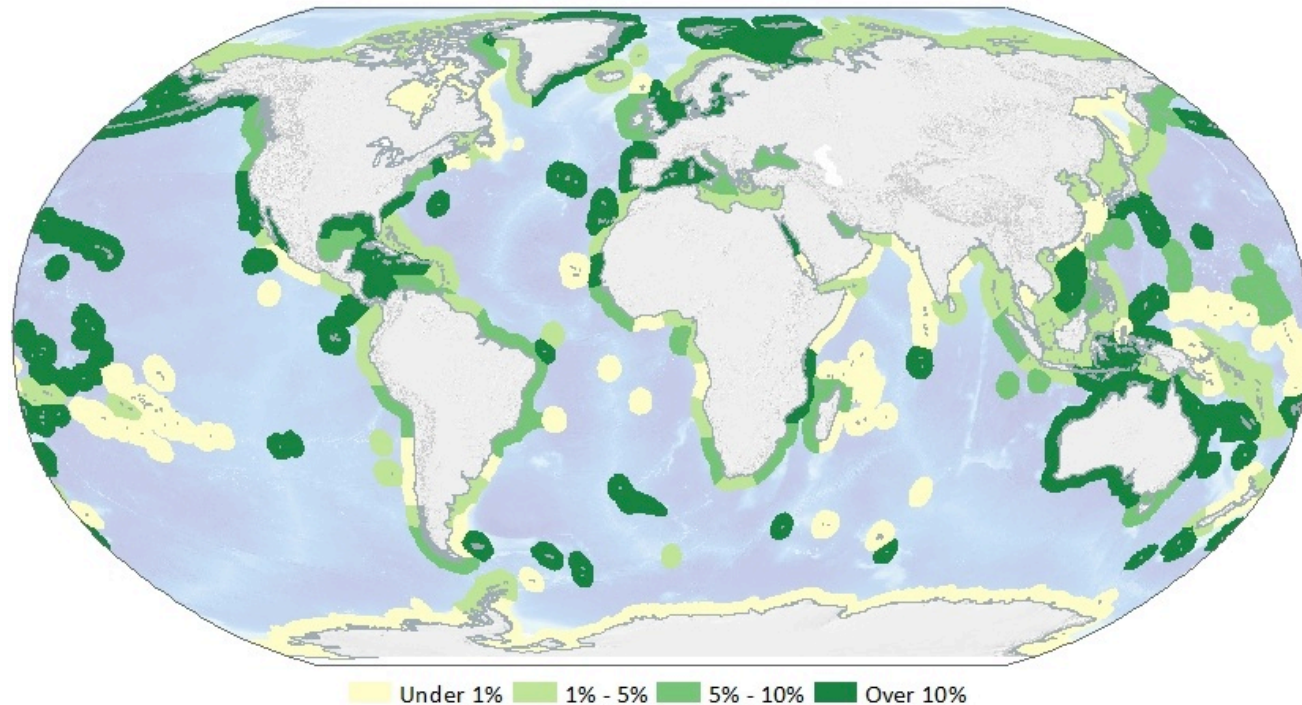
Terrestrial ecoregion protection in 2014



823 terrestrial ecoregions in seven realms and fourteen biomes. The Neotropics is the only realm with 17% coverage. Temperate grasslands (4.5%) and tropical and subtropical dry broadleaf forests (9.6%) are worst biomes...

ecologically representative and well connected systems

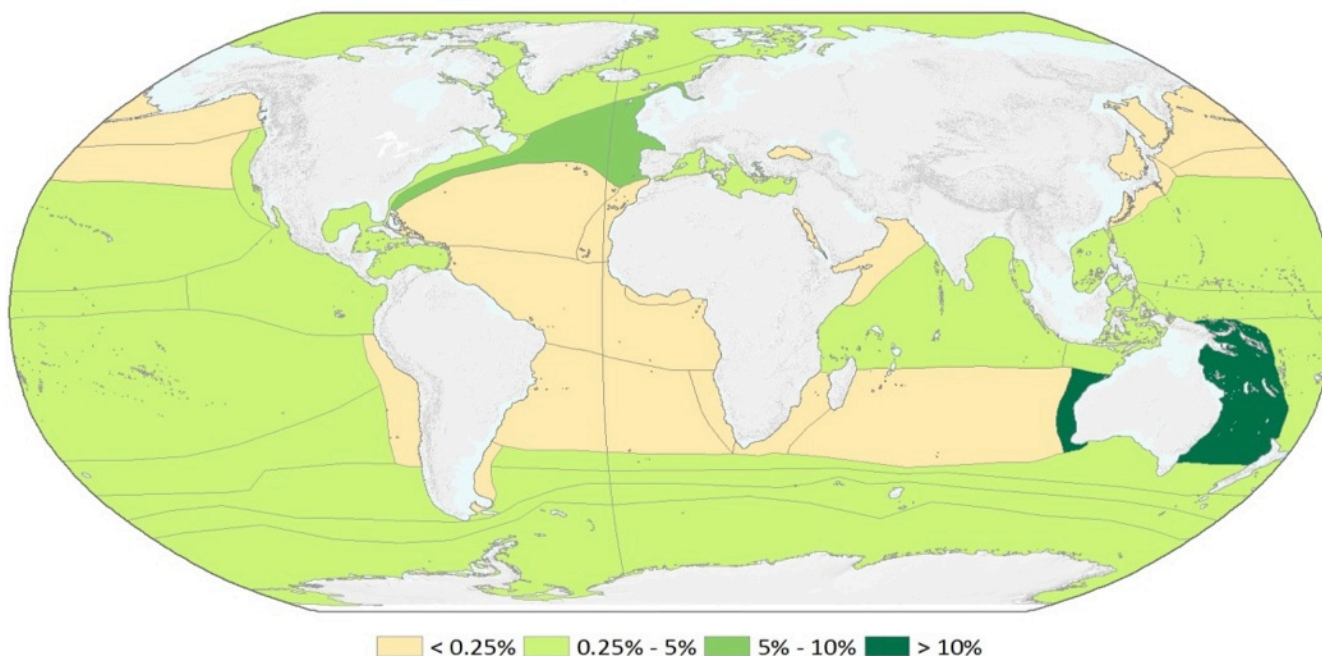
Marine ecoregion protection in 2014



232 marine ecoregions in 62 marine provinces and 12 marine realms. Half of the realms and 39% of the provinces meet the 10% target

ecologically representative and well connected systems

Pelagic provinces in 2014



37 pelagic provinces: 66% of the earth's total surface. Only 2 (5%) of the 37 pelagic provinces meet the 10% target...

effectively and equitably managed,

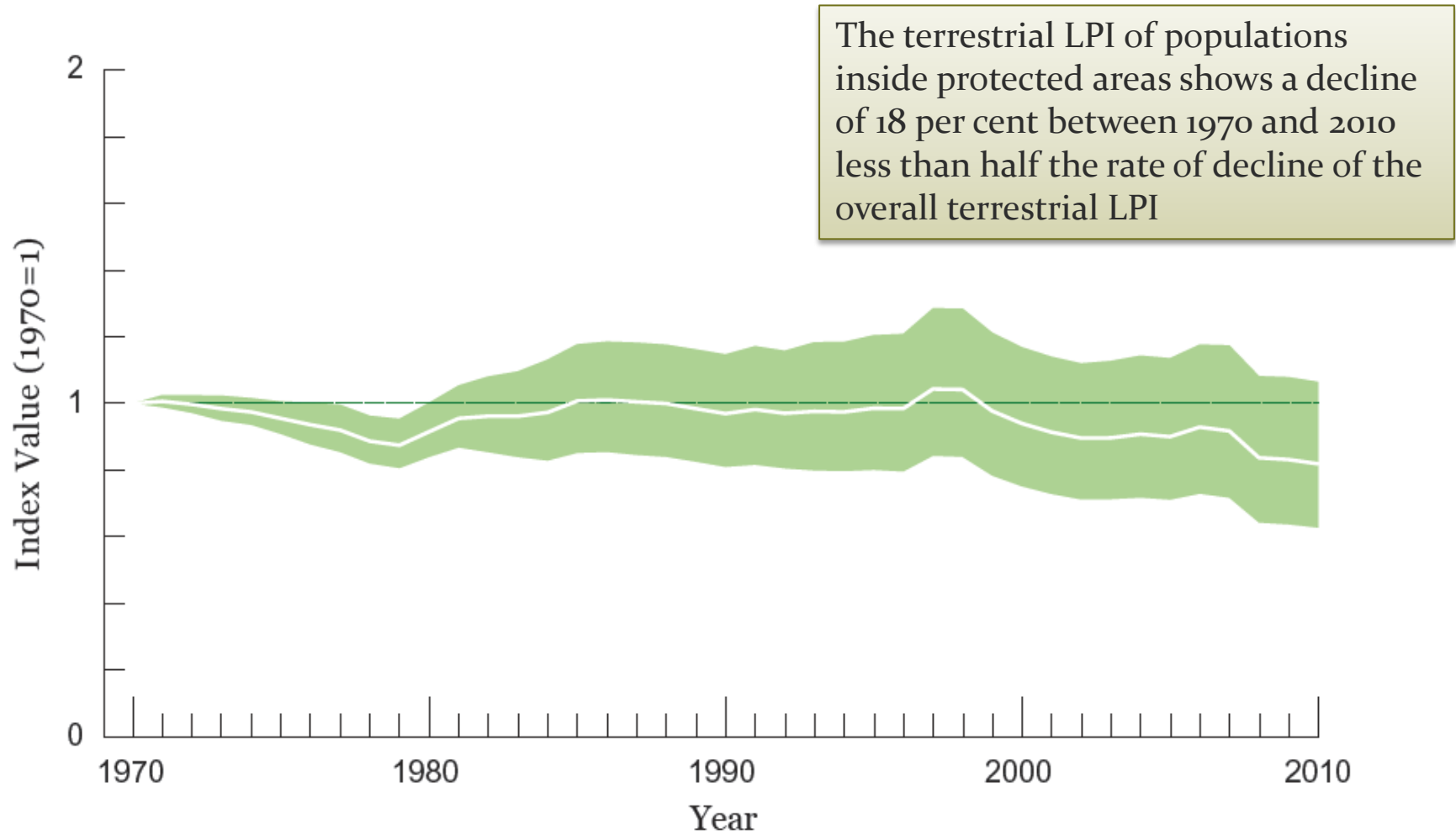
Effectively managed protected areas

Are management inputs and processes relevant and appropriate?



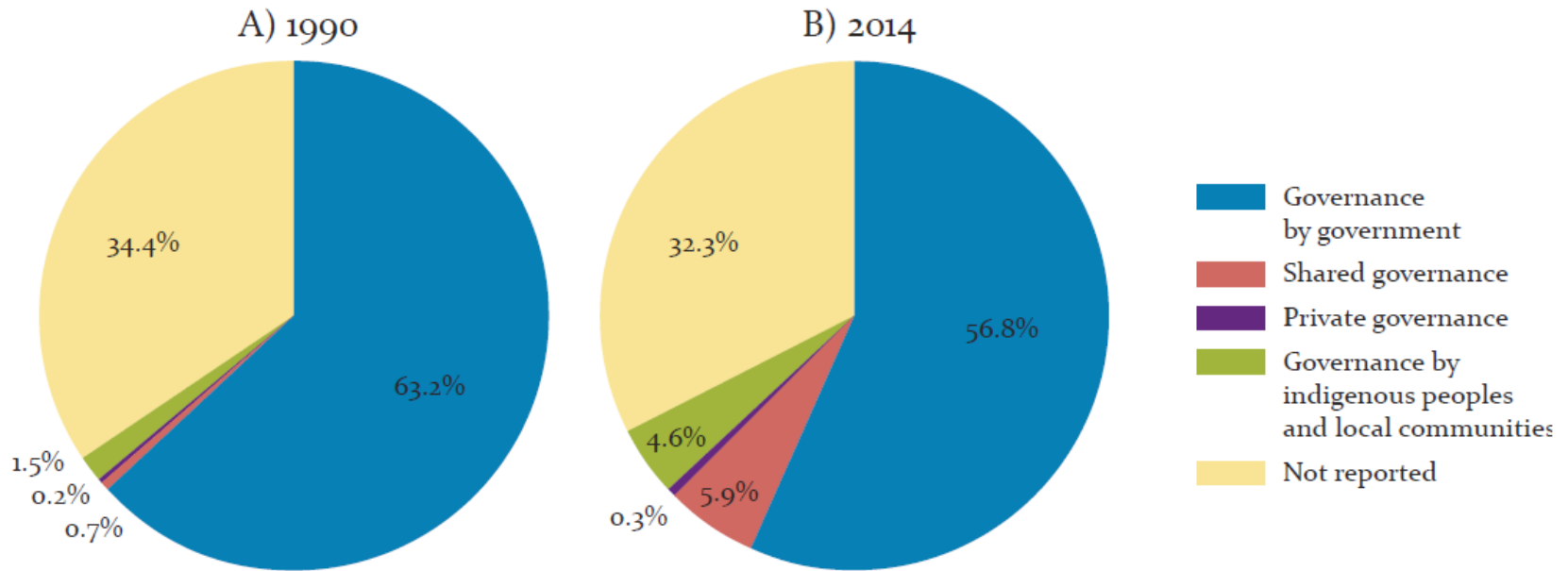
Are values of the protected area being maintained and objectives achieved?

effectively and equitably managed,



effectively and equitably managed,

Governance type



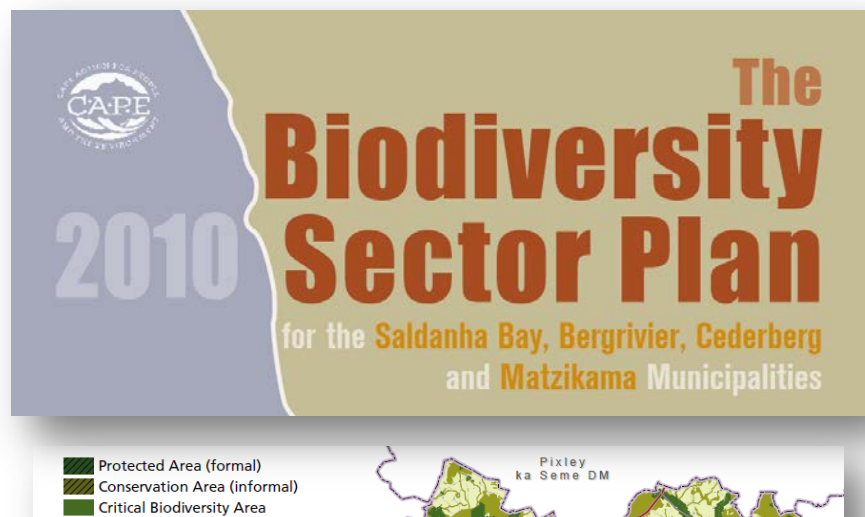
On its way – the WDPA is being ‘re-imagined’....

...other effective area-based conservation measures



The need to account for and measure the extent and nature of “other” areas remains an important gap in global conservation statistics.

integrated into the wider landscapes and seascapes.



Protected areas should be integrated into national and local planning. There are already numerous mechanisms for doing so, ranging from scientific methods such as systematic conservation planning at landscape scales, to CBD-endorsed processes like NBSAPs and national-level planning such as the Biodiversity Act in South Africa.

Thank you...

<http://wcmc.io/ProtectedPlanetReport2014>

Follow us!



@protectedplanet



Protected Planet

protectedareas@unep-wcmc.org



UNEP



WCMC



WCPA
WORLD COMMISSION
ON PROTECTED AREAS



protected
planet®