

A sustainable co-management of fisheries experience in a marine protected area

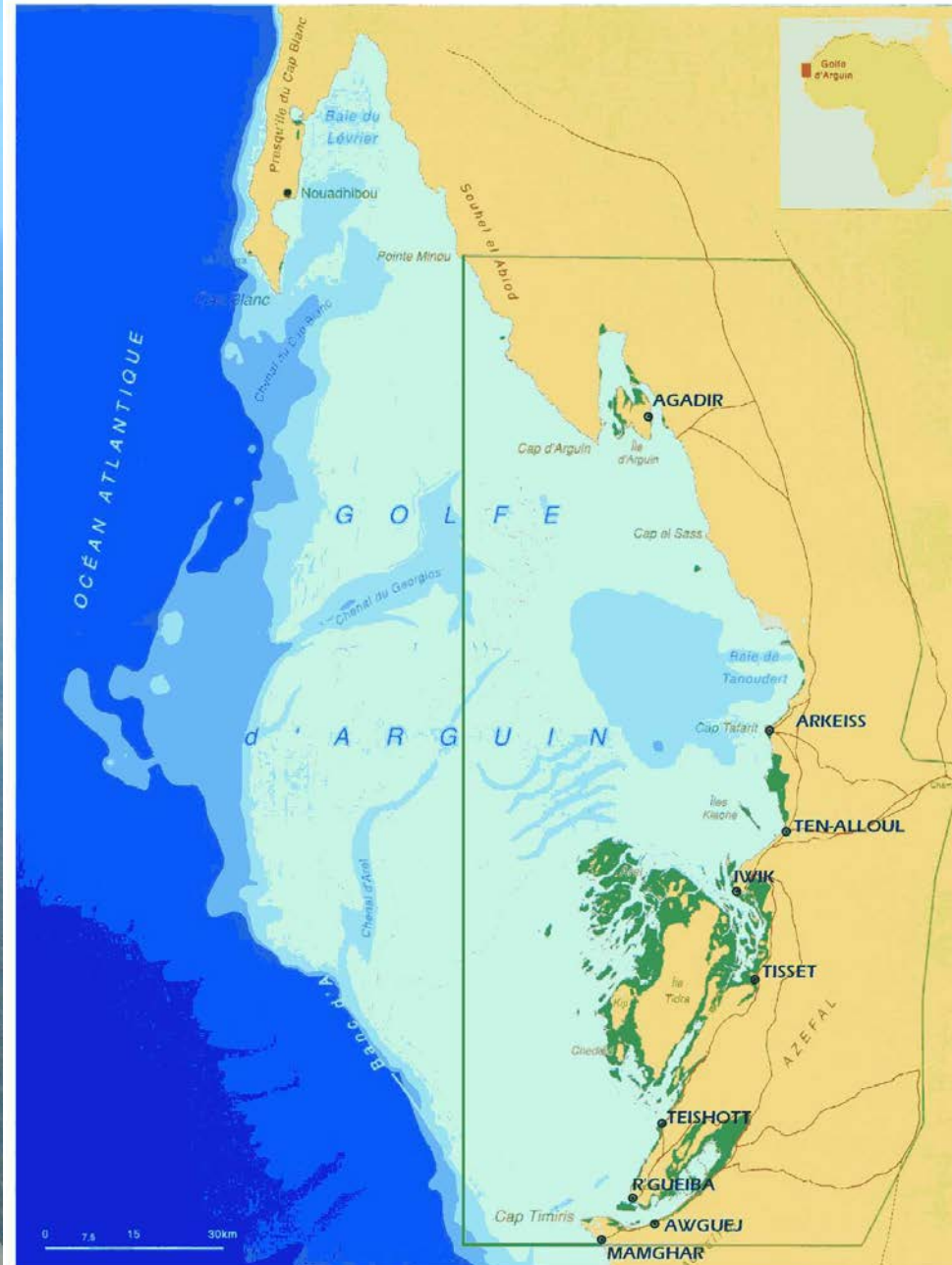
The involvement of fisherman Imraguen of Banc d'Arguin National Park (PNBA)

GEF side-event on Sustainable Coastal Fisheries /
WPC, November 2014

Description and wealth

- PNBA covers an area of 12,000 km²
- Coastal and maritime domain is composed of shallow and numerous island and islets.
- The PNBA is in a virtually permanent upwelling zone, which explains the biological richness of its waters.
- The PNBA is a favorable environment for migratory species such as the yellow mullet « *Mugil cephalus* », fish of the family Sciaenidae and some species of Sharks and Rays

CARTE DU PARC NATIONAL DU BANC D'ARGUIN



— Limites du Parc National du Banc d'Arguin

— Pistes principales

- The richness of Banc d'Arguin is also its population « *IMRAGUEN* ».
- Imraguens is the only authorized to practice in a controlled fish stocks in the protected reserve where the use of motorboats is strictly prohibited exploitation.



In the past...

- A subsistence economy based on traditional fishing.
- Fishing for yellow mullet net feet and shoulder



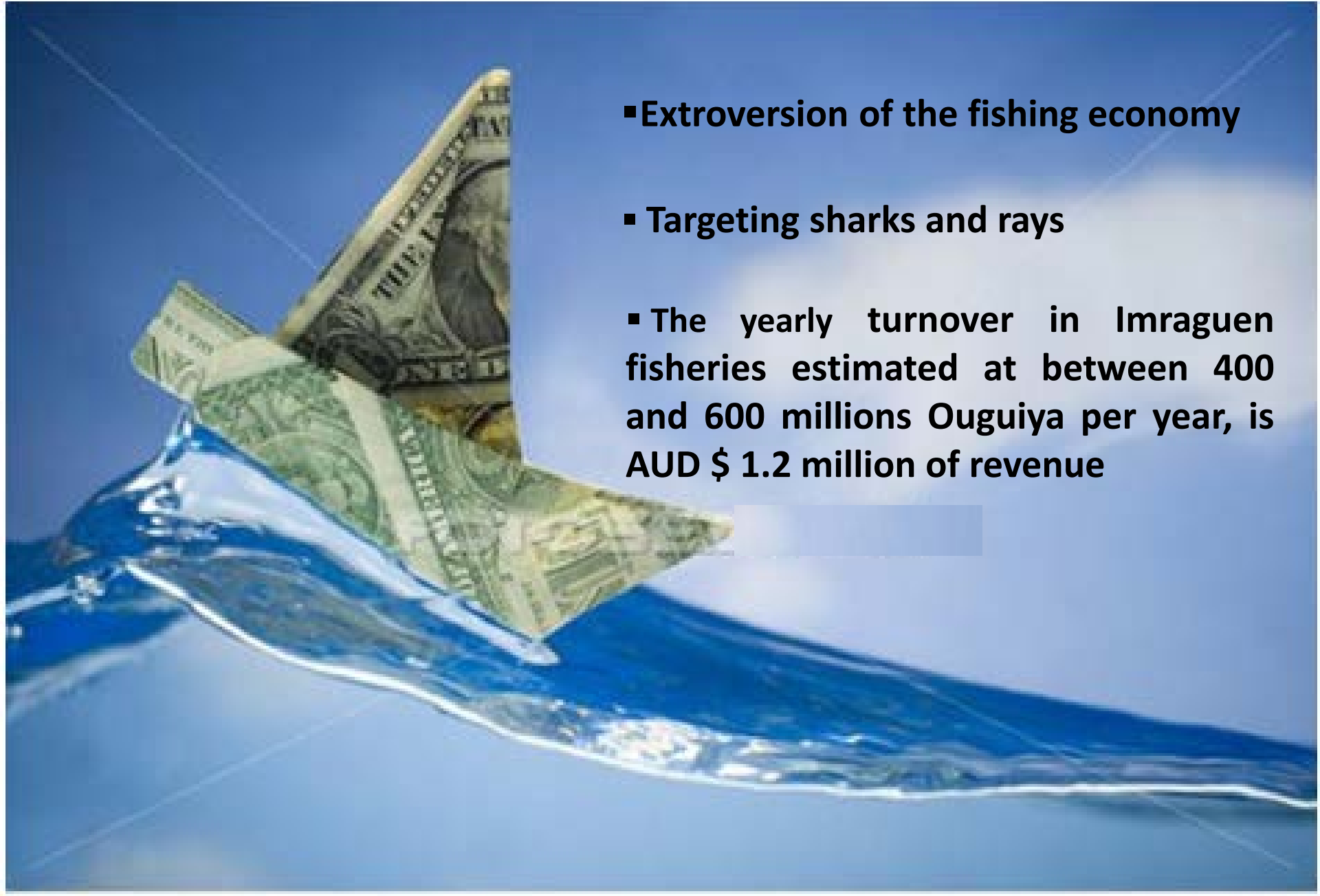
The LANCHES: *Canarian heritage of the last century*



- Appropriation of new fishing technics
- Targeting new fish species
- Market Economy, opportunity cost

Social and economic changes to master...

- Extroversion of the fishing economy
- Targeting sharks and rays
- The yearly turnover in Imraguen fisheries estimated at between 400 and 600 millions Ouguiya per year, is AUD \$ 1.2 million of revenue



Participatory management, a requirement for the institution of PNBA...

- The statement Arguin between Imraguen and the PNBA : 1996
- First consultation workshop in **1998**
- Decision to halt targeted fishing of sharks and rays in **2003**
- Creating committees fishing village in **2006**



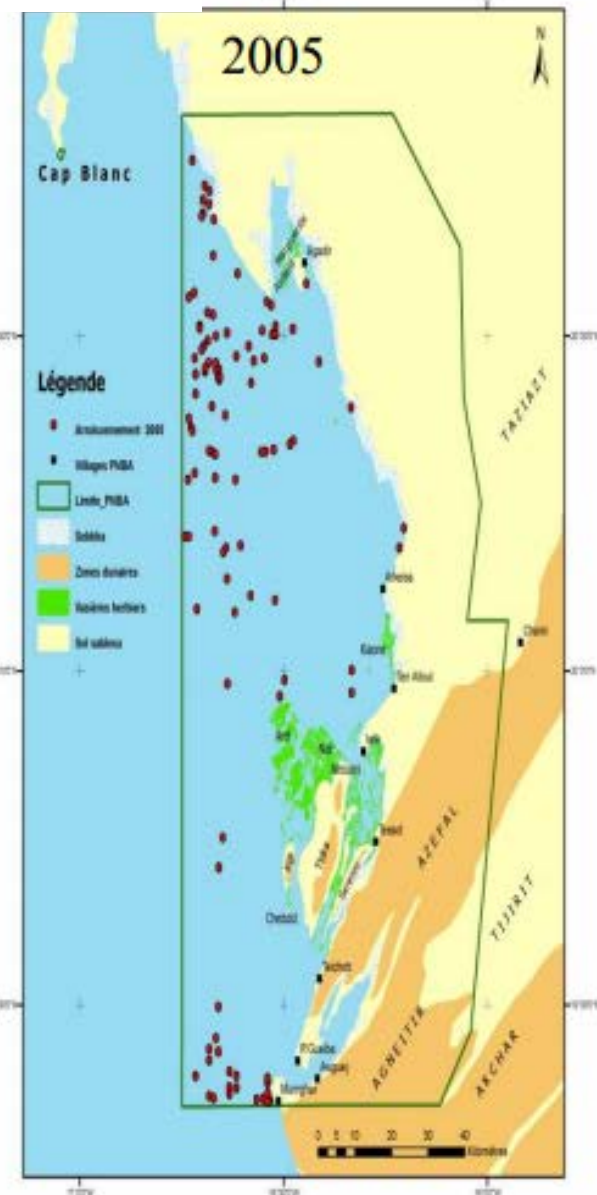
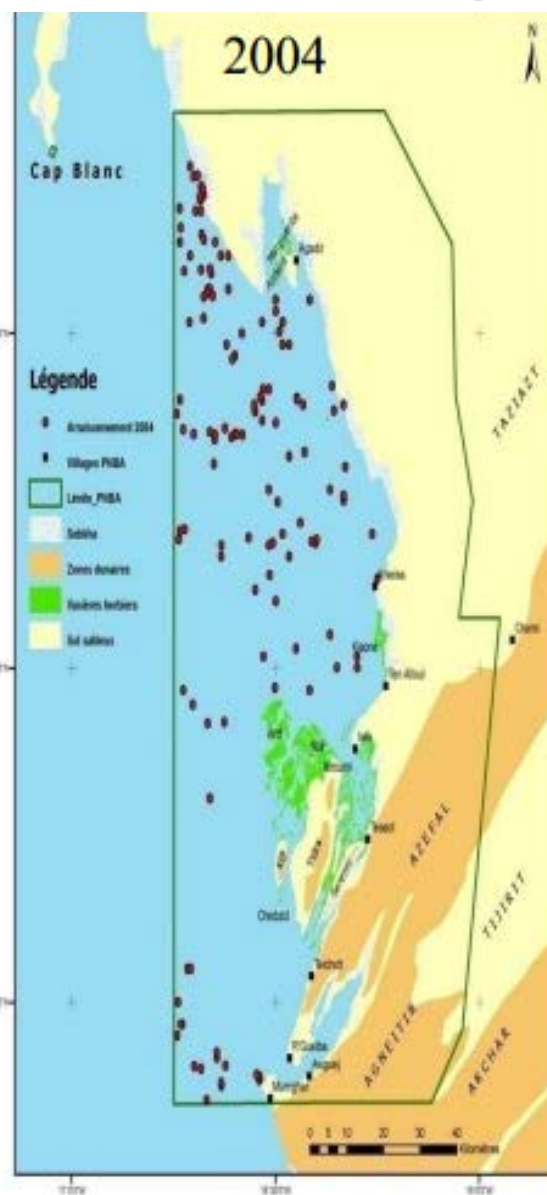
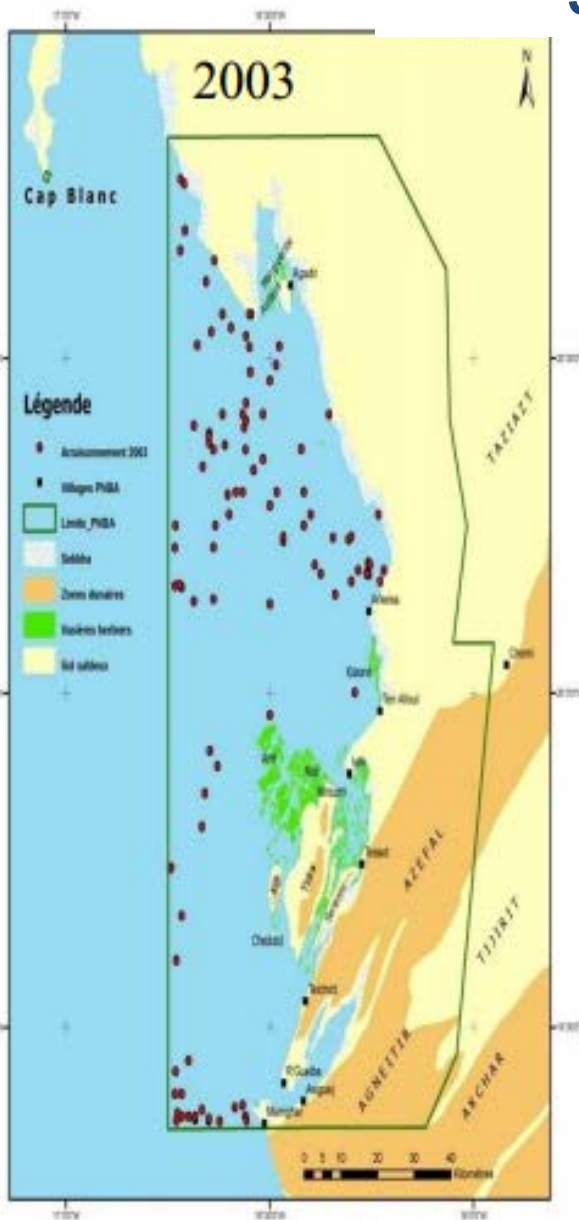
- A tripartite monitoring device : PNBA - GCM – IMRAGUEN



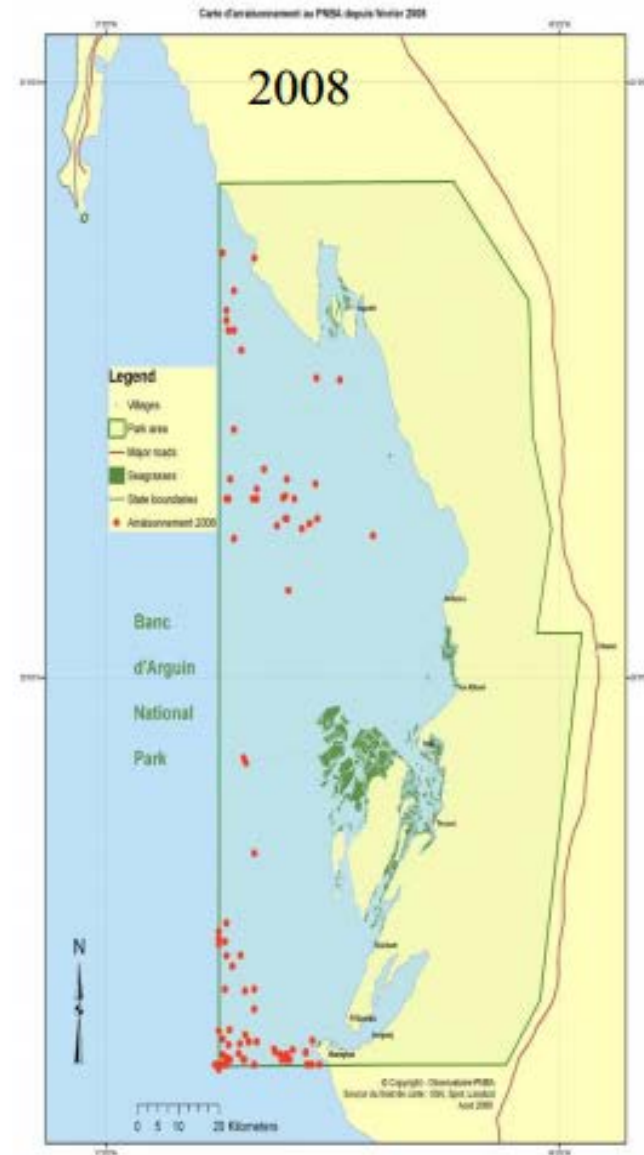
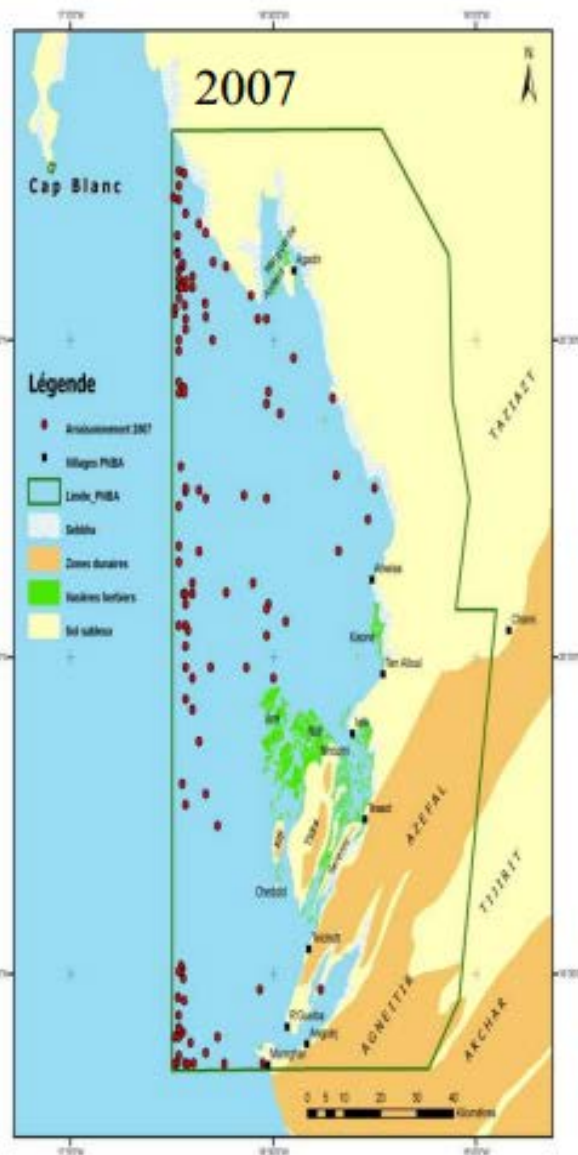
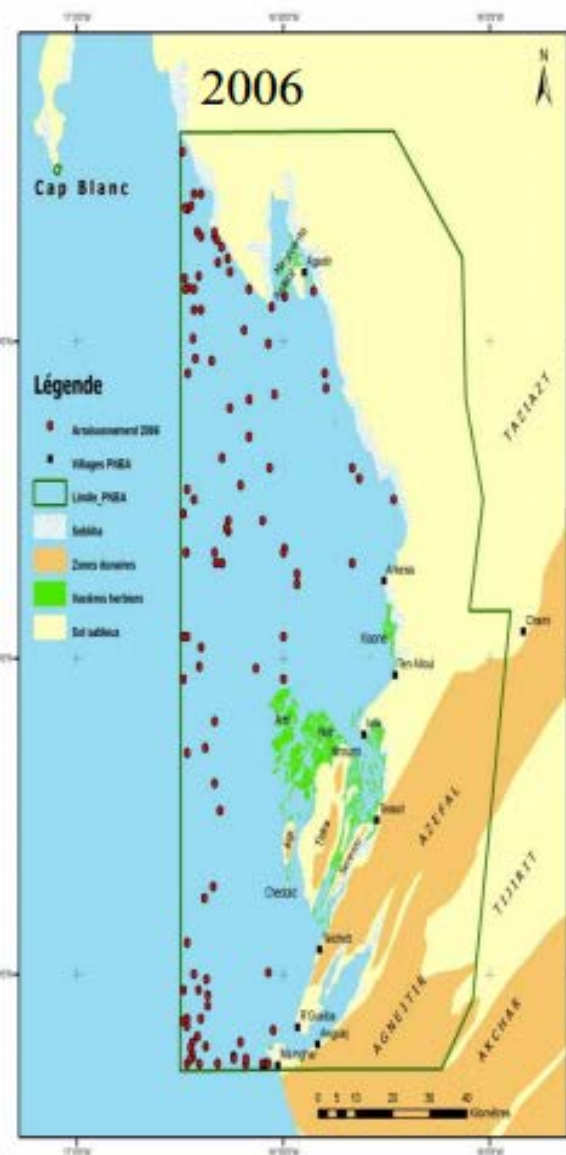
Carte de localisation des points d'arraisonnement

Surveillance at sea: a proven

les points d'arraisonnement au PNBA en 2005



Monitoring result at sea



Lessons learned...

✓ The monitoring of PNBA, the most powerful network of MPAs
RAMPAO

✓ The population involvement in Imraguen watch on seas has helped improve fishing conditions on areas highly frequented by canoe fishermen.

✓ The establishment of local consultative bodies has restored trust with managers PNBA.

An aerial photograph of a sailboat with a single white sail on a large body of water. The water is a deep blue-green color. In the background, a coastline is visible with a mix of sand and vegetation. The sky is clear and blue.

Thank you for your attention