



# Participative solution to a land tenure conflict in Serra dos Órgãos National Park, Brazil

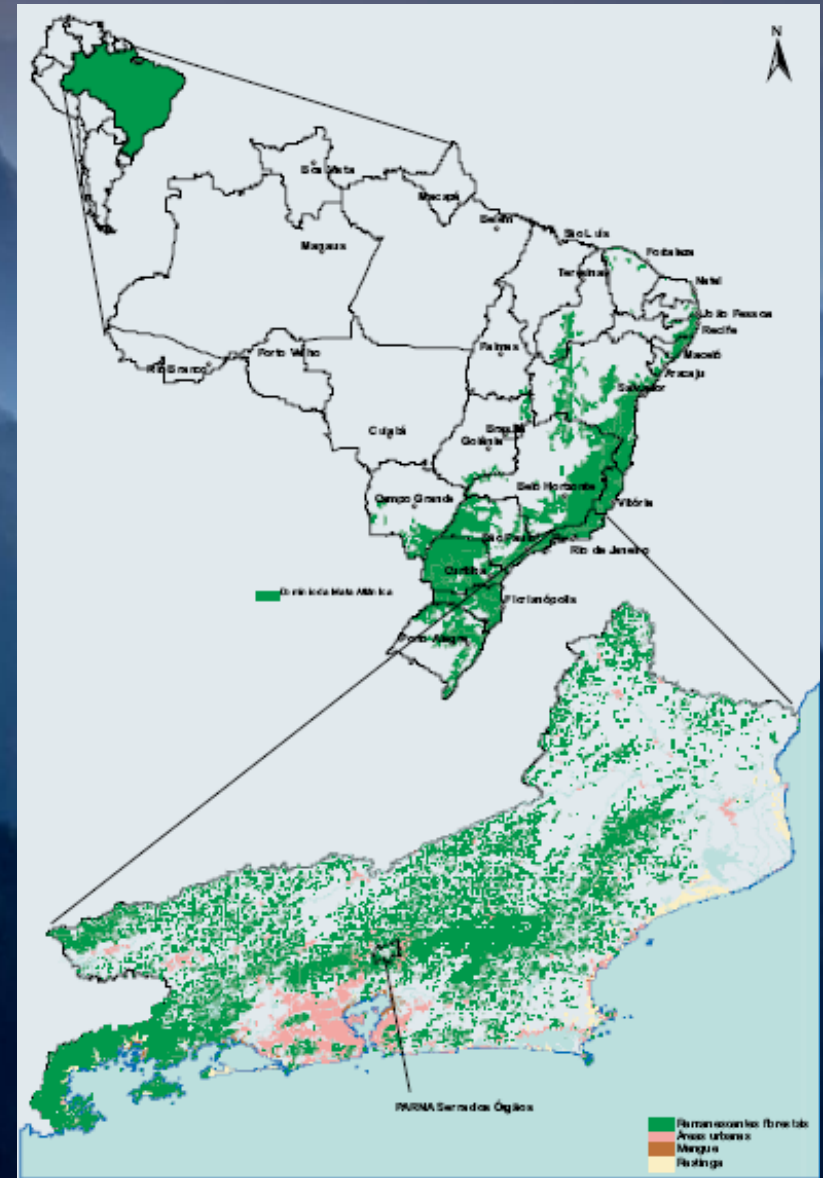
Cecilia Cronemberger, Ana Elisa Bacellar-Schittini,  
Ernesto Viveiros de Castro, Marcus Gomes and  
Leandro Goulart

Instituto Chico Mendes de Conservação da  
Biodiversidade



# Serra dos Órgãos National Park

- Created in 1939, before laws about protected areas, is the third oldest park in Brazil.
- In the mountains, 90 km from Rio de Janeiro.
- Protects 20,024 ha of Atlantic Rainforest.



# History of the conflict

**1939**

Park is created without defined borders. Indefinition affects management.

**1950s**

The bank which runs Bonfim Farm falls in bankruptcy and farm employees start occupying the land.

**1984**

Park limits are defined including the Bonfim valley, despite intense occupation. Park – community conflict begins.

**2004**

Park's consultative council is established with participation of Bonfim dwellers. Conflict is acknowledged.

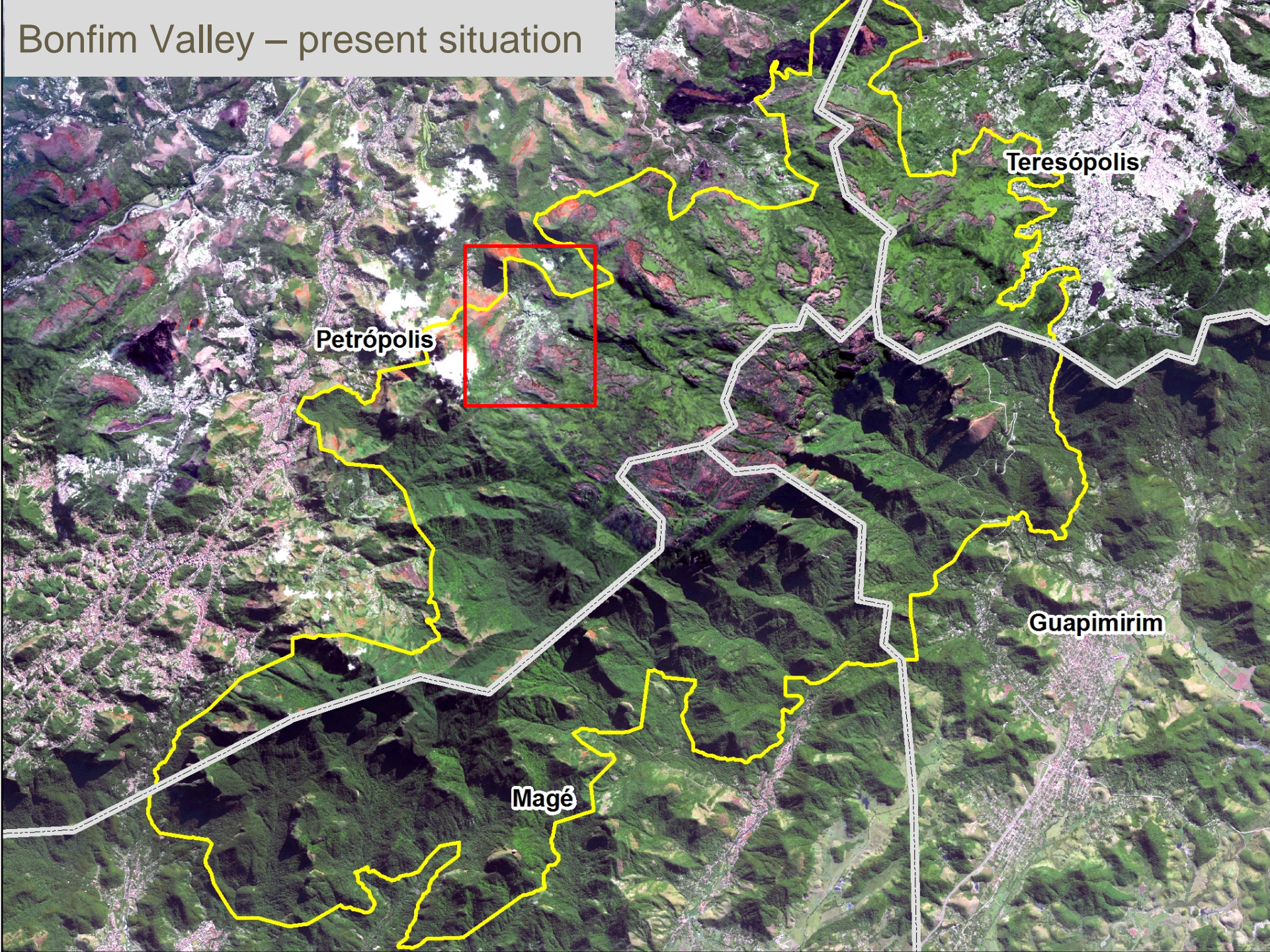
**2010**

Park creates working group to study Bonfim's situation and propose solutions

There is no territory governance without defined boundaries.

Brazilian Law states that National Parks should be of public domain and free of human occupation.

# Bonfim Valley – present situation



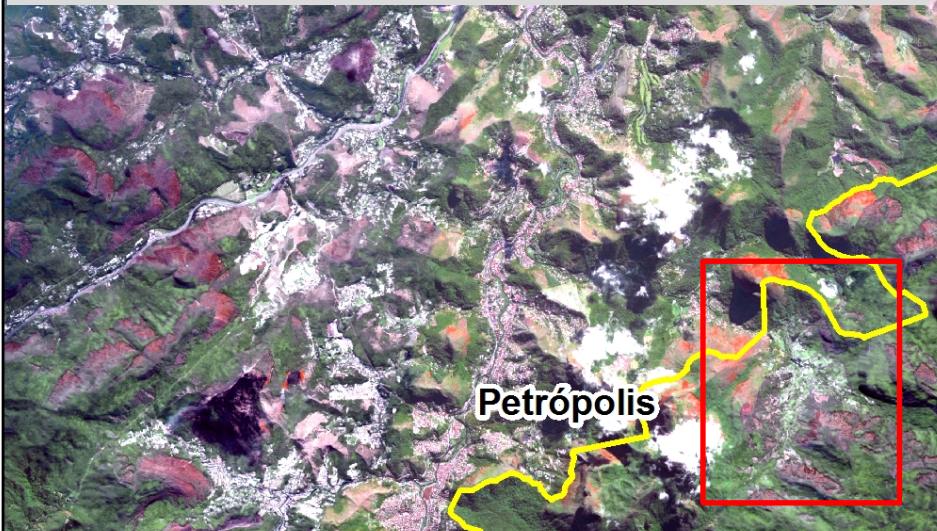
**Petrópolis**

**Teresópolis**

**Guapimirim**

**Magé**

# Bonfim Valley – present situation



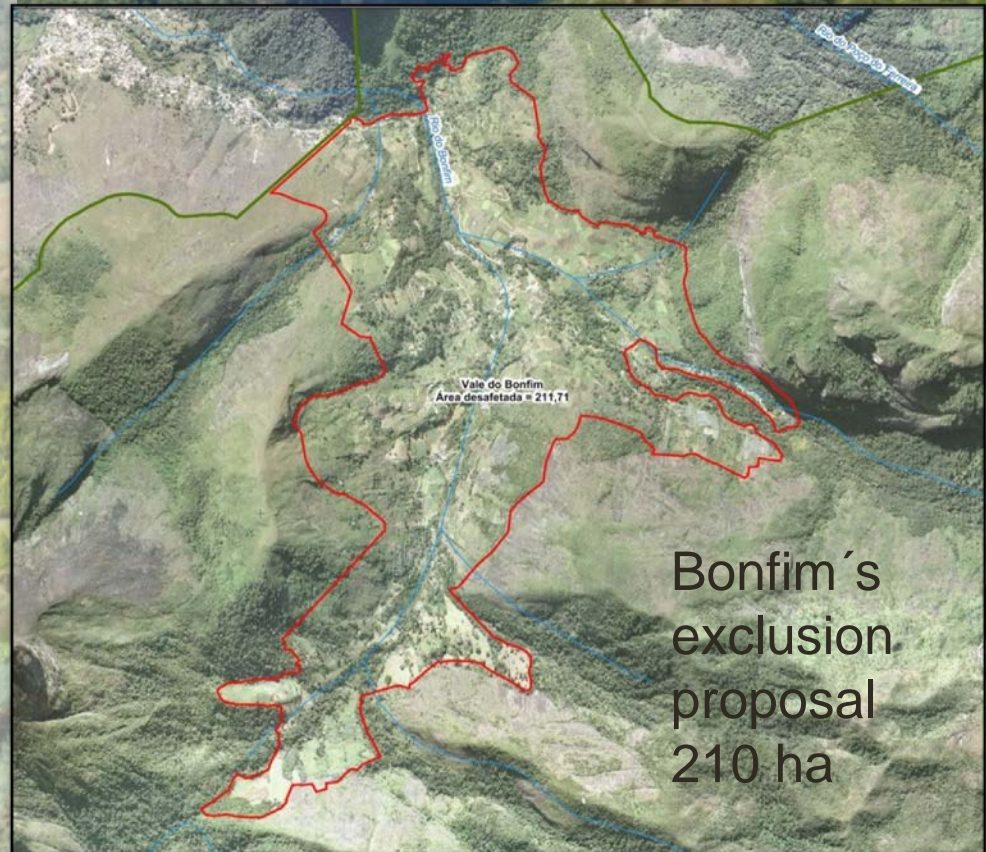
- 210 hectares of occupied land.
- 90 families (approximately 400 people).
- Most families don't have legal land ownership.
- Vegetable and flower production.
- Great costs to return area to natural condition.
- 30 years of park-community conflict.

Magé



# Results

- Working group suggested excluding Bonfim's occupation from the park.
- Park should buy one property to build local headquarters.
- Technical study evaluated other areas that need limit corrections.
- Field surveys and mapping lead to strong technical proposition endorsed by park and community.
- Proposal approved in public hearing (july 2013).
- Proposal needs to be approved by Brazilian Ministry of Environment and Congress.



# What changes with the exclusion from the park?

## Bonfim Community

- ✓ Inside National Park (illegal) → Inside Petrópolis Environmental Protection Area (legal)
- ✓ Building and agriculture is prohibited → Building and agriculture allowed, following rules.
- ✓ Park - community conflict → Park – community partnership.
- ✓ The solution to a conflict is more likely to succeed when it involves the community.



# OBRIGADA!

Cecilia Cronemberger

Parque Nacional da Serra dos Órgãos

[www.icmbio.gov.br/parnaserradosorgaos](http://www.icmbio.gov.br/parnaserradosorgaos)

[cecilia.faria@icmbio.gov.br](mailto:cecilia.faria@icmbio.gov.br)