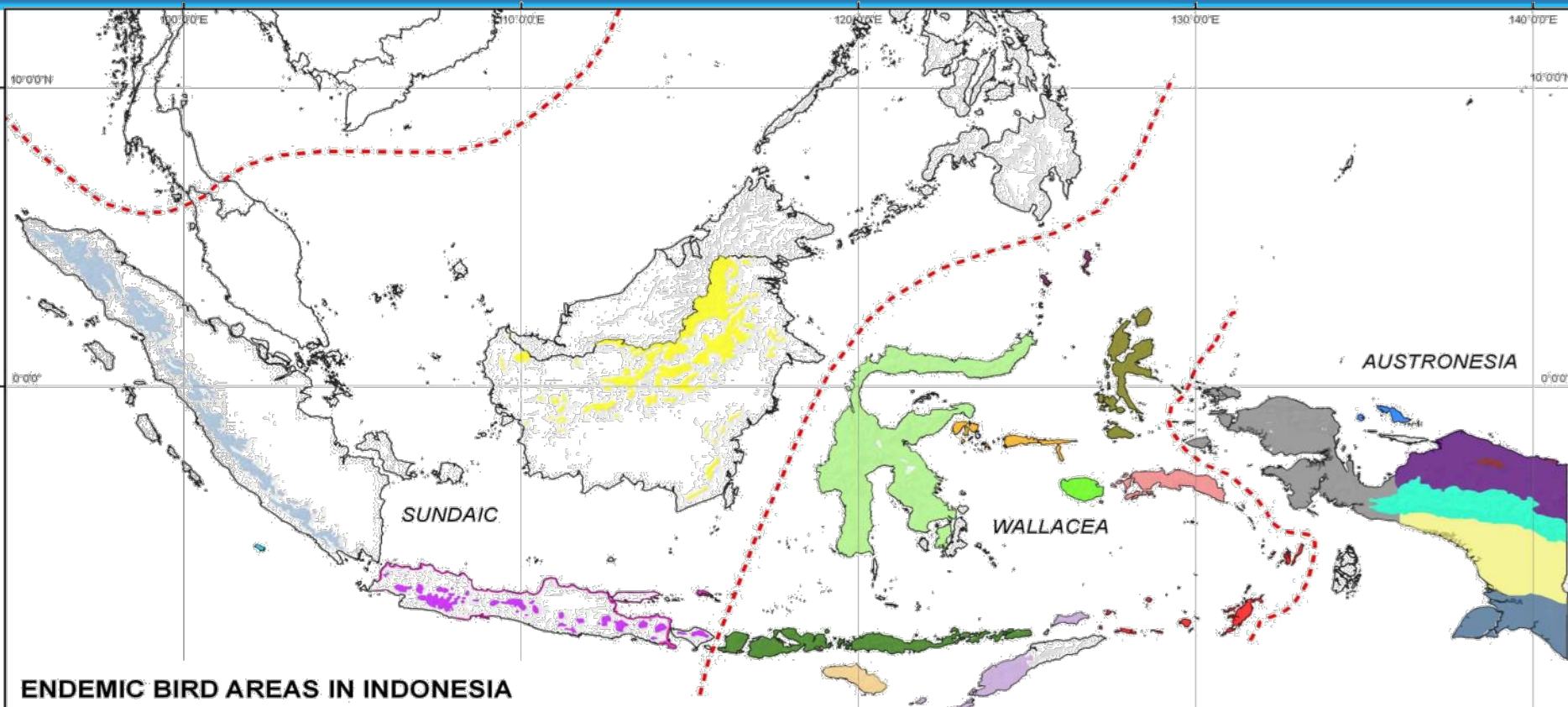
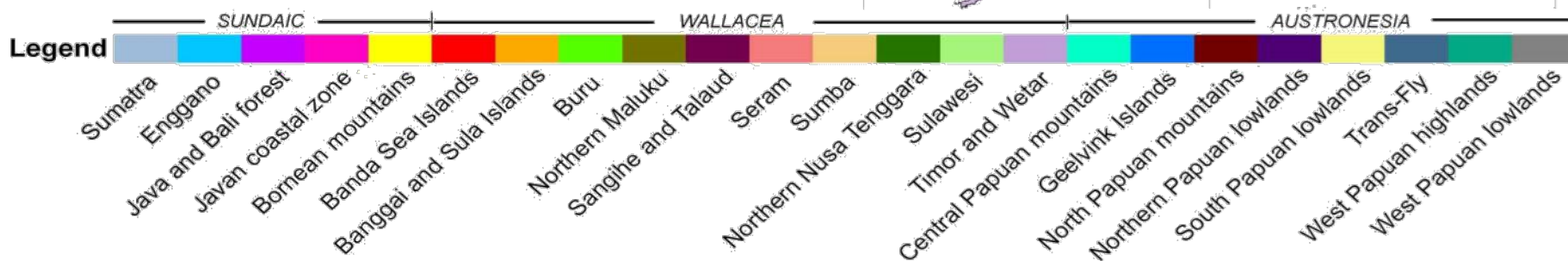


# Landscape approach to conservation and restoration: an experience from Flores, Indonesia

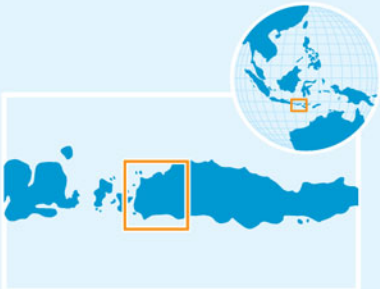
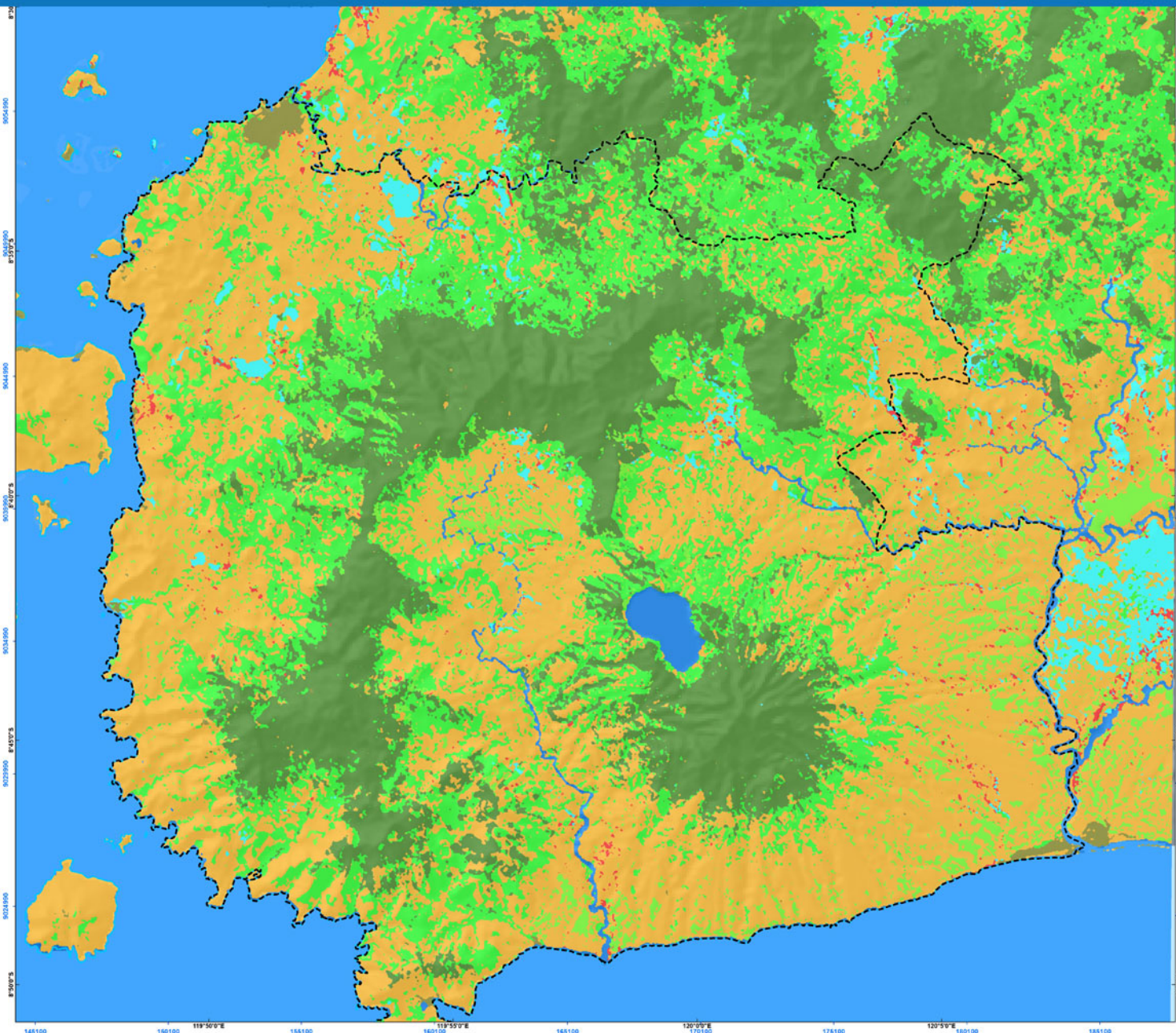




### ENDEMIC BIRD AREAS IN INDONESIA



# West Flores, Indonesia



### Legend:

- Forest
- Agroforest
- Savana
- Settlement
- Ricefield
- Wetland

Map: BI/ Bambang Tetuka, Layout: BI/ Aip Abbas



Burung Indonesia is BirdLife in Indonesia

[www.burung.org](http://www.burung.org)



## **Forests:**

Priority for conservation

IBA (KBA) Mbeliling -  
Keritamese

10 Globally Threatened Bird Species

Route of [23] migratory birds

Water service

## **Agro-forest :**

candle-nut, coffee, cocoa,  
cashew-nut, clove

## **Agriculture:**

rice, livestock

## Improving natural resources governance at the landscape level

Landscape area : 94,000 Ha  
District : Manggarai Barat  
Province : East Nusa Tenggara (NTT)

### Forest area

Total : 30,000 Ha

- 40,2% of total forest area in West Manggarai District

### Non-forest area

Total : 64,000 Ha

- 27 villages
- Population: 30,612  
(7,191 hh = 14,6% of district's population)

- NTT is the 3<sup>rd</sup> poorest province in Indonesia with 20% population under poverty line

District  
Government

**Landscape Multi-stakeholder Committee:**  
Develop strategic plan for landscape management

Sub-district  
Government

**Landscape Community Forum (FPKM);**  
Taking resource management issues in the landscape to the sectoral offices; influence development agendas

Village  
Government

**Clustered Community Groups (CDGs):**  
Taking joint actions to address economic issues: co-operatives, cash-crop production, joint marketing of agro-forest commodities.

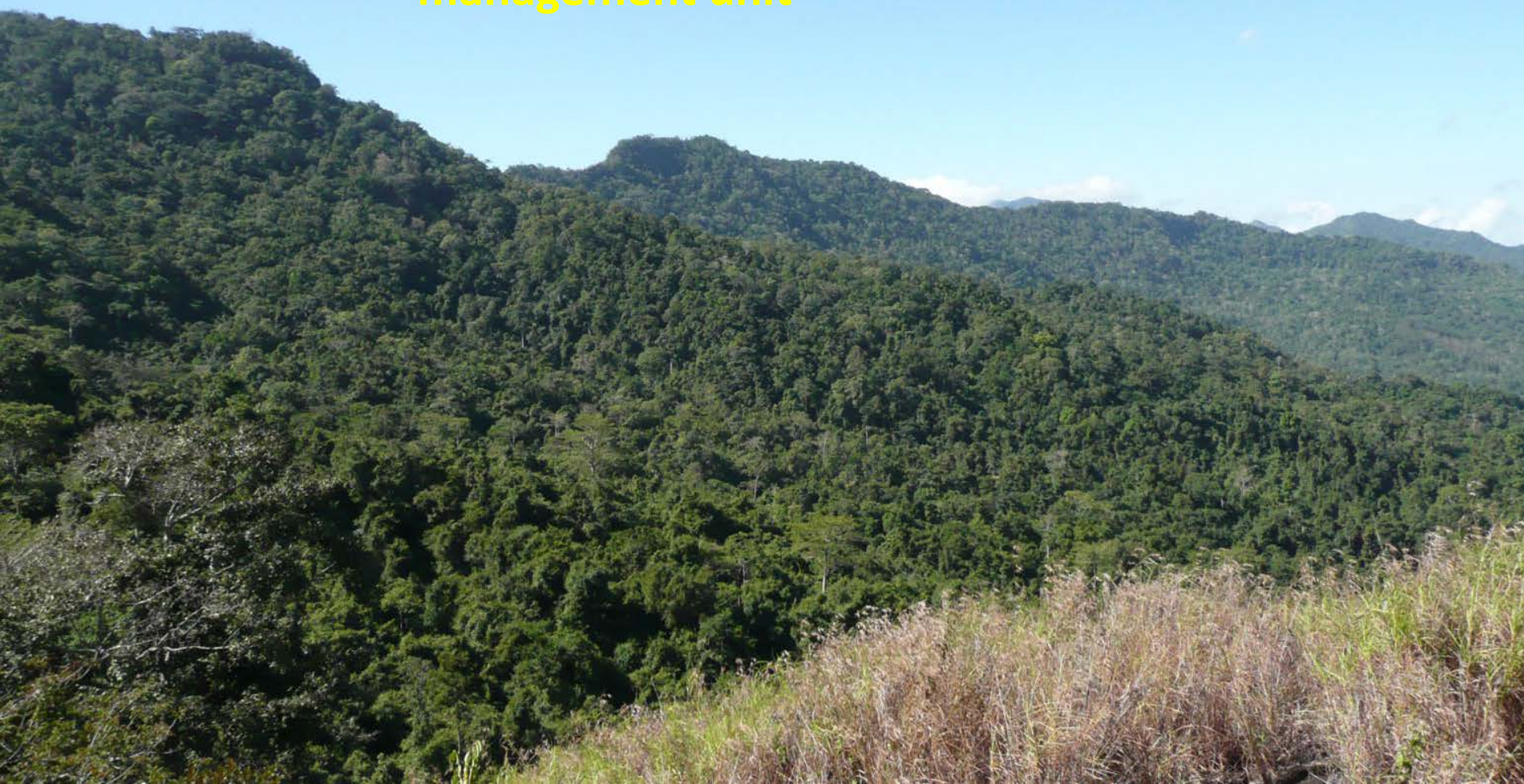
**Village Resource Management Agreements;**

**Community Conservation and Development Groups (CGDs):**  
Promote conservation and development agenda: monitoring of environmental services, tree nurseries and plantings, micro-finance, ecotourism, joint marketing of agro-forest commodities.

Development of landscape  
management plan & integration  
of landscape approach into  
district development policy



**Working with stakeholders to establish forest management unit**

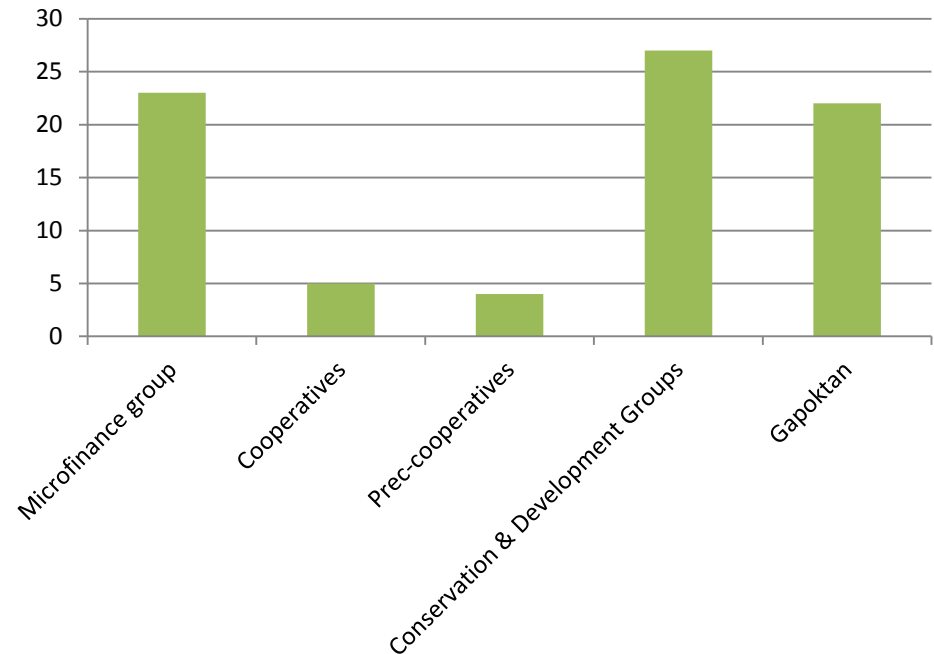




## Community groups working on conservation and development issues



Number of community groups in  
Mbeliling landscape





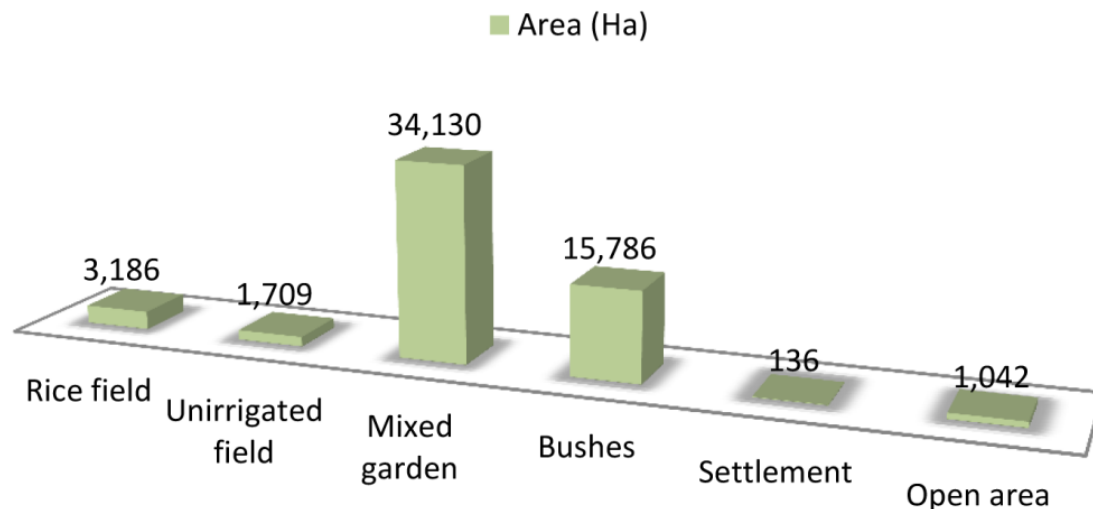


Monitoring ecosystem services for  
environmental management

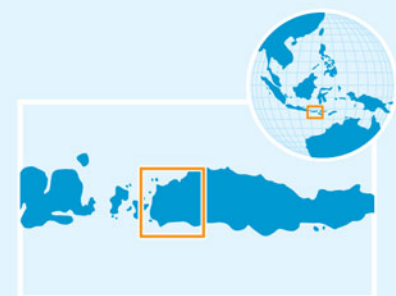
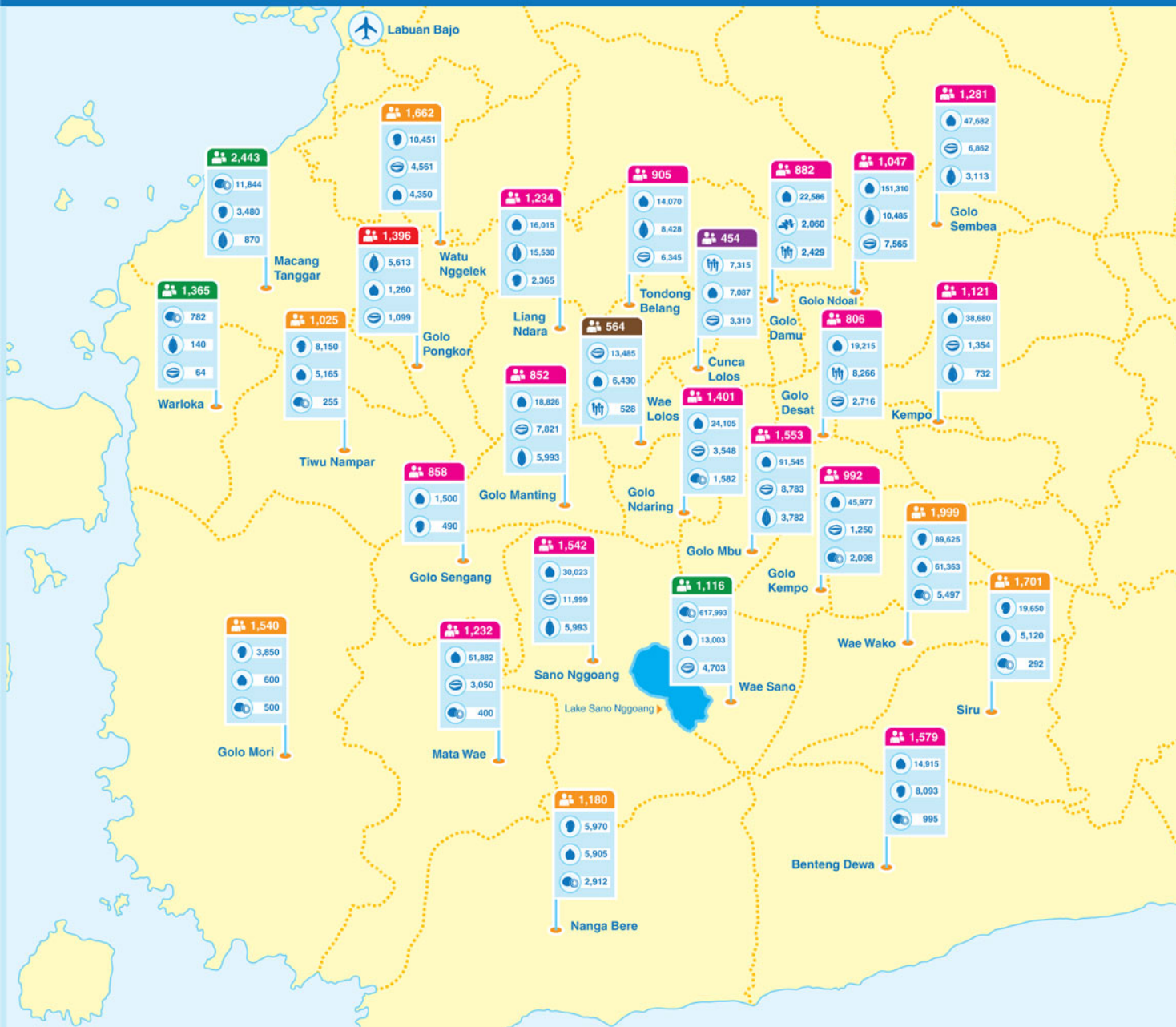
## Improving land productivity instead of opening new farms



### Land-use in non-forest area



# Distribution of Top Commodities



## Legend:

- ⋯ Village Boundary
- Population
- Airport
- Candlenut
- Coffee
- Cacao
- Melindo
- Cashew
- Clove
- Clove
- Vanilla
- Coconut
- Village with Candlenut as top commodities
- Village with Cashew as top commodities
- Village with Coconut as top commodities
- Village with Cacao as top commodities
- Village with Coffee as top commodities
- Village with Clove as top commodities

Map: BI/ Bambang Tetuka, Layout: BI/ Aip Abbas



Burung Indonesia is BirdLife in Indonesia

[www.burung.org](http://www.burung.org)



**Conservation needs to be inclusive as one of current development priorities**