



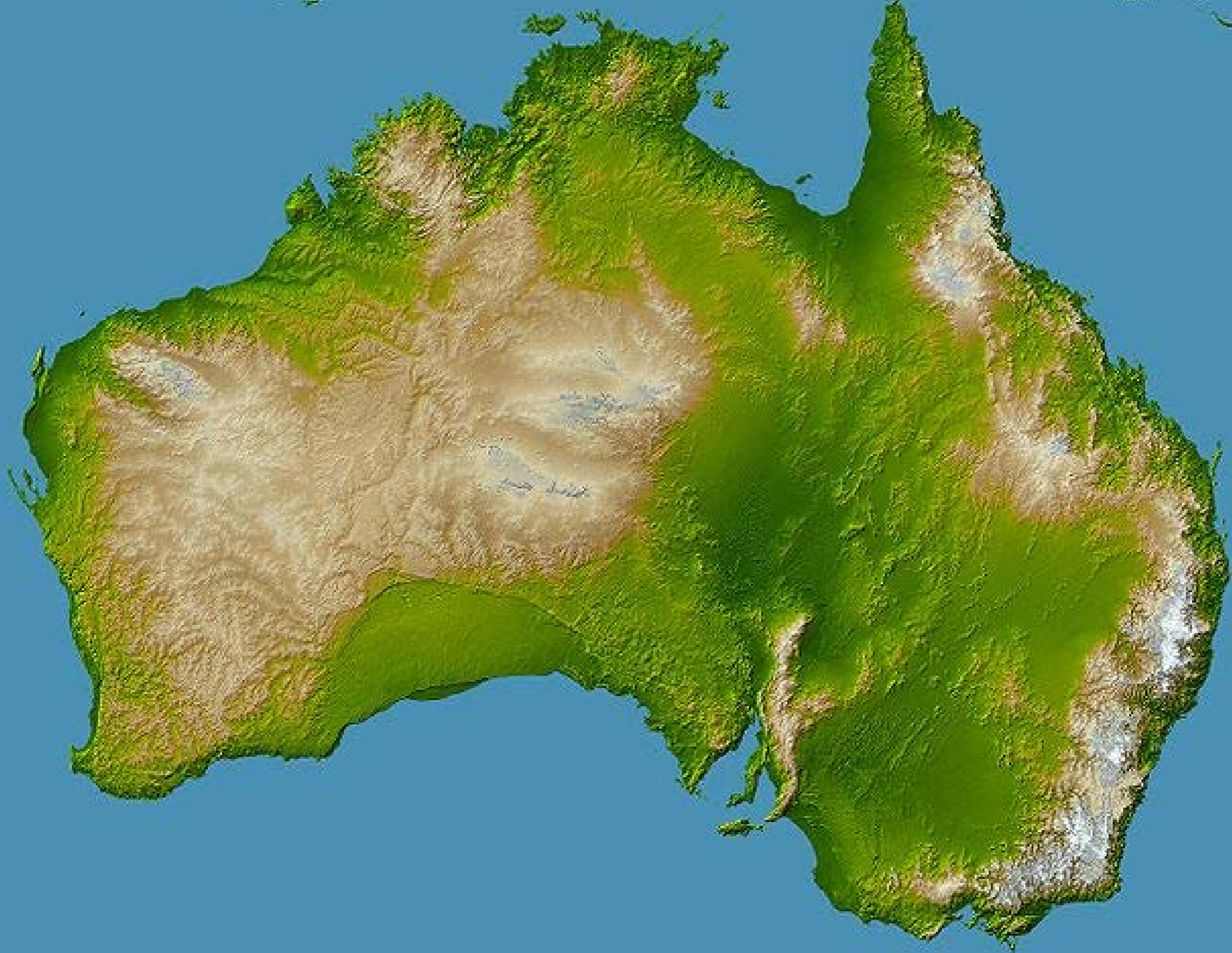
IUCN
WORLD PARKS
CONGRESS
SYDNEY 2014

*Parks, people, planet:
inspiring solutions*

A stylized landscape illustration with a dark blue foreground, a white waterfall on the left, and blue mountains in the background under a light blue sky with a bird silhouette.

Panel discussion:
Connectivity of Water Services

Steve Meacher
Friends of Leadbeater's Possum





Lower Murray

Grampians
Wimmera
Mallee

Goulburn Murray

Southern Rural

Map 1

CENTRAL HIGHLANDS
Regional Forest Agreement

Land Tenure and Zoning

- RFA Boundary
- Rivers
- Roads

CAR Reserve System *

- Dedicated Reserve
 - Conservation Parks and Reserves
- Informal Reserve
 - State Forest Special Protection Zone
 - Other

Other land tenure and zoning
Other Parks and Reserves

- Other Parks and Reserves
- Areas with restricted timber production
- State Forest
 - Special Management Zone
 - General Management Zone

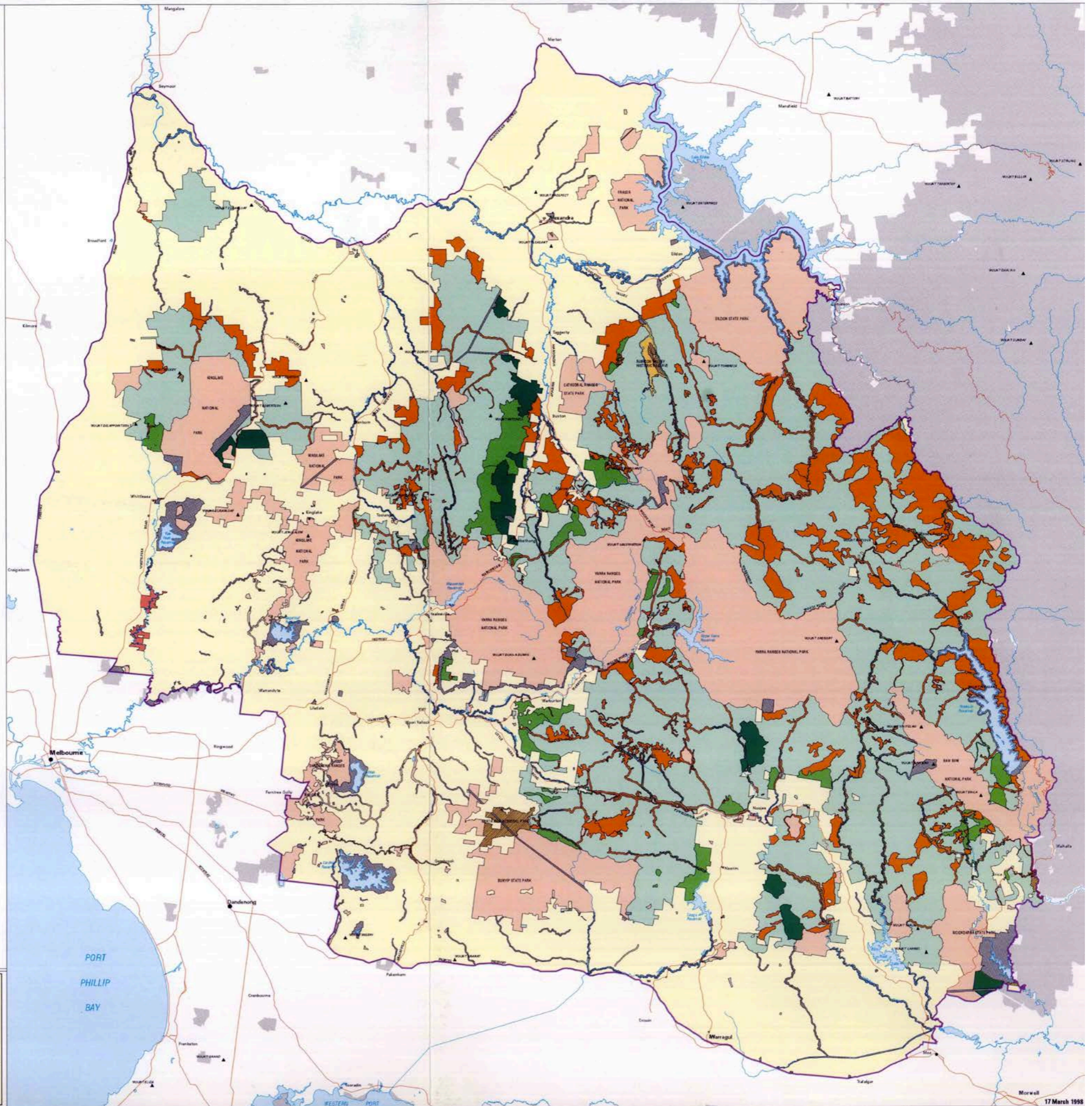
Other Public Land

- Other than plantations
- Plantations

- Private Land
- Water Bodies
- Public Land outside the study area

* The CAR Reserve System land categories are described in Attachment 1 of the Central Highlands Regional Forest Agreement

Data Sources: Victoria NRE (1998)



Projection: Universal Transverse Mercator, AMG Zone 56

LOCALITY MAP











AUSTRALIAN NATURAL FORESTS HAVE FAR LARGER CARBON STOCKS THAN IS RECOGNIZED

Our analyses showed that the stock of carbon for intact natural forests in south-eastern Australia was about 640 t C ha⁻¹ of total carbon.

The highest biomass carbon stocks, with an average of more than 1200 t C ha⁻¹ and maximum of over 2000 t C ha⁻¹, are in the mountain ash (*Eucalyptus regnans*) forest in the Central Highlands of Victoria and Tasmania.

Brendan G. Mackey, Heather Keith,
Sandra L. Berry and David B. Lindenmayer

GREEN CARBON

The role of natural forests in carbon storage

Part 1. A green carbon account of
Australia's south-eastern eucalypt
forests, and policy implications

2008

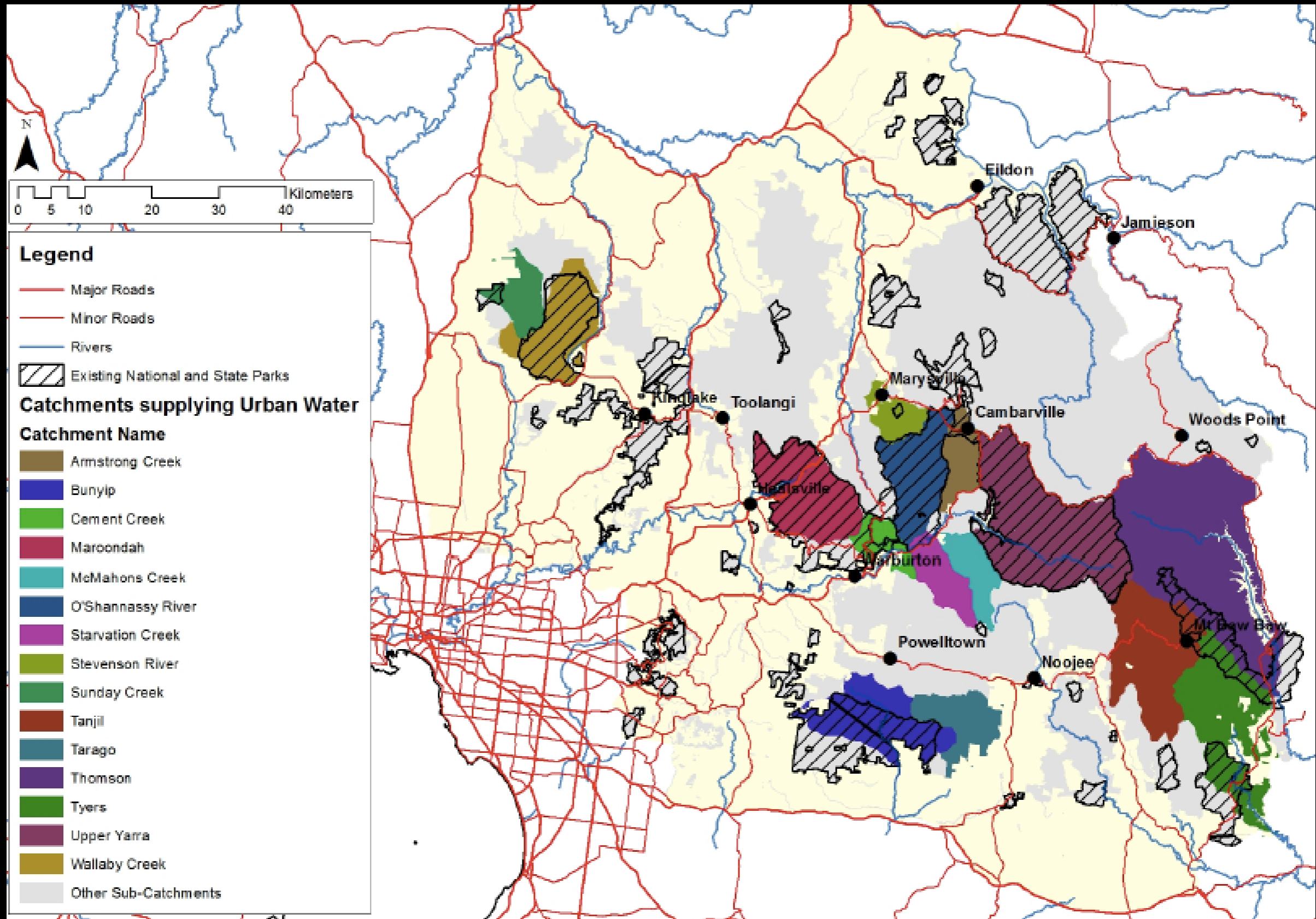




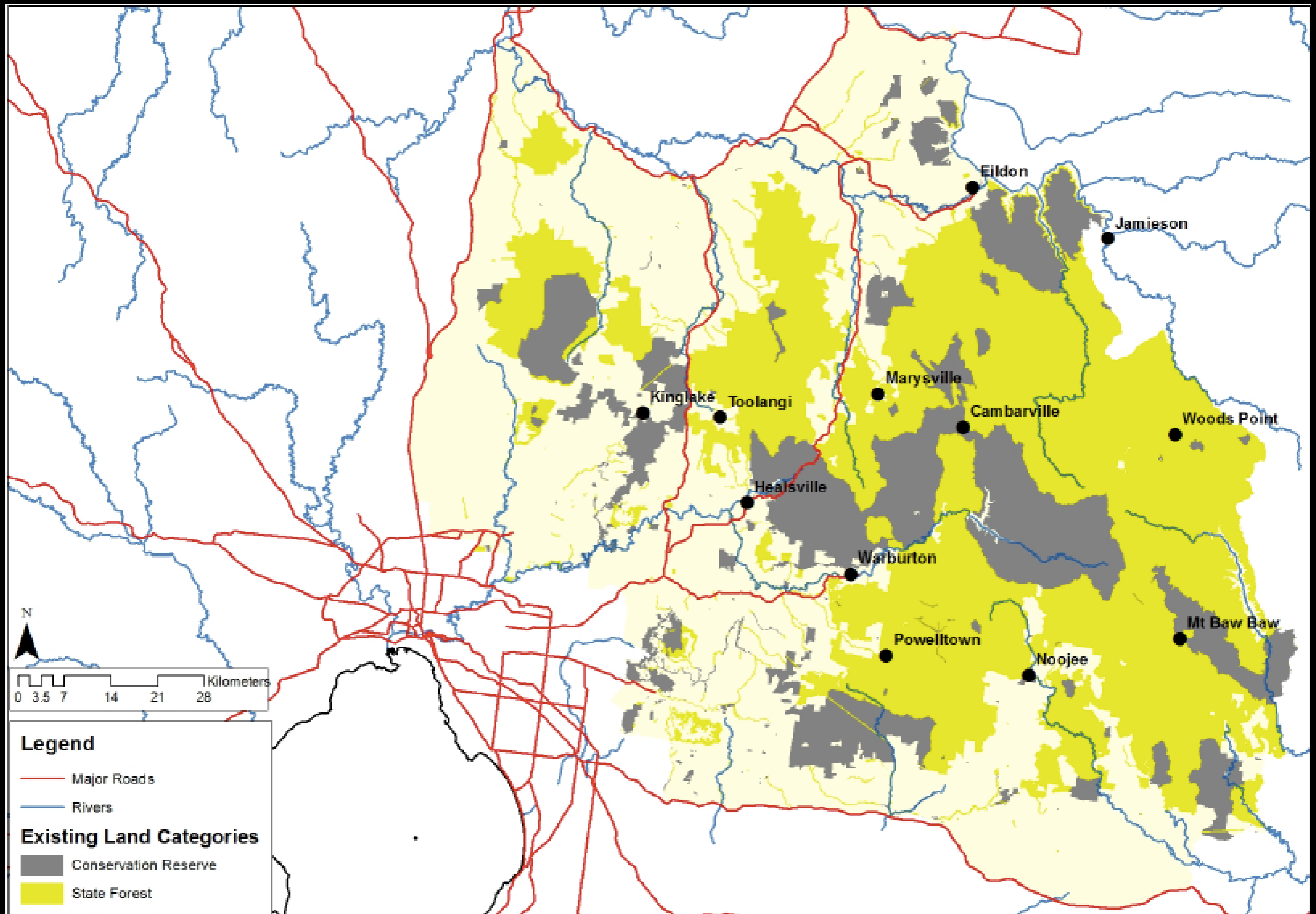




THE CENTRAL HIGHLANDS HAVE BEEN THE MOST IMPORTANT REGION FOR THE SUPPLY OF DRINKING WATER TO THE CITY OF MELBOURNE



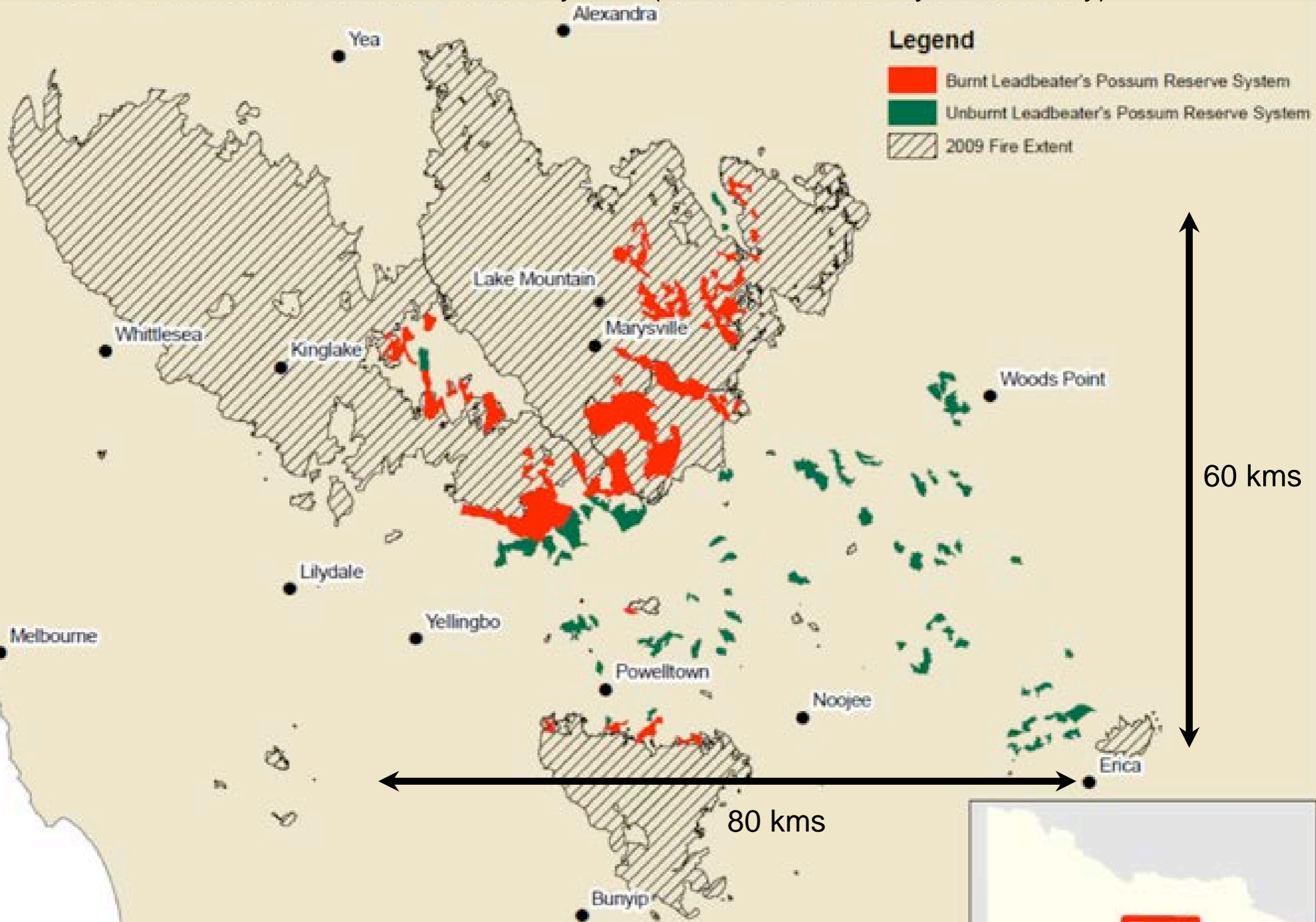
THE CENTRAL HIGHLANDS HAVE BEEN THE MOST IMPORTANT REGION FOR THE SUPPLY OF DRINKING WATER TO THE CITY OF MELBOURNE







Leadbeater's Possum Reserve System (with Black Saturday Fire overlay)



Leadbeater's are only found in the Central Highlands of Victoria, within approximate limits of 60 x 80km













Approved TRP Map (with all approved amendments applied)

Central FMA

Marysville

(2011 - 2016)

The Timber Release Plan has been prepared in accordance with the Sustainable Forest (Timber) Act 2004.

Note:
This information was compiled for use at 1:100,000. Details may not match accurately if plotted at larger scales.
For further information about the TRP contact:
VicForests, Melbourne
Phone: 0396089500
Email: vls.trp@vicforests.com.au

DISCLAIMER

This map is generated from VicForests and Victorian Government data and may be of assistance to you. However, VicForests does not guarantee that the publication is without flaw of any kind and therefore disclaims all liability for error, loss or damage which may arise from reliance upon it.



Map Projection:
GDA 94 Zone 55

Legend

Timber Release Plan

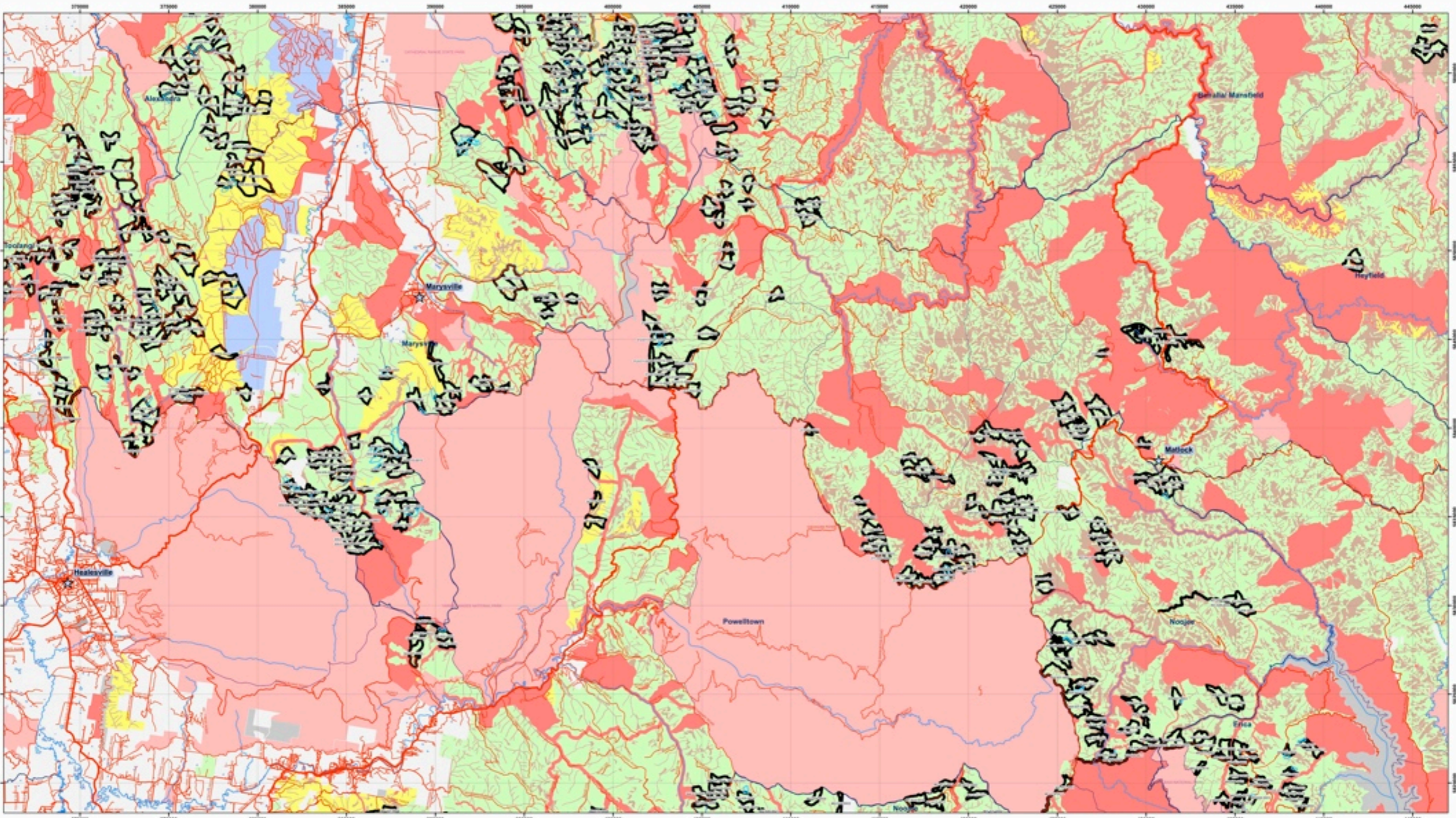
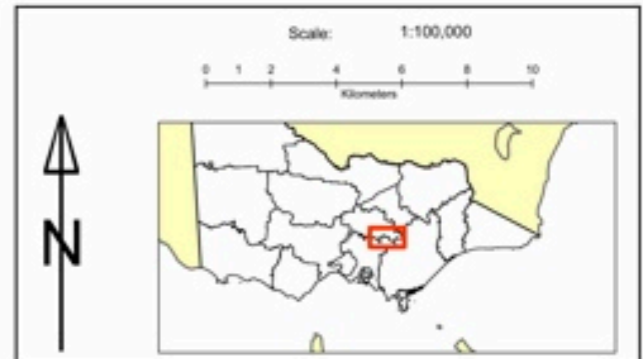
- Current Approved TRP Coupes
- Current Approved TRP Driveways
- Current Approved Log Storage Facilities

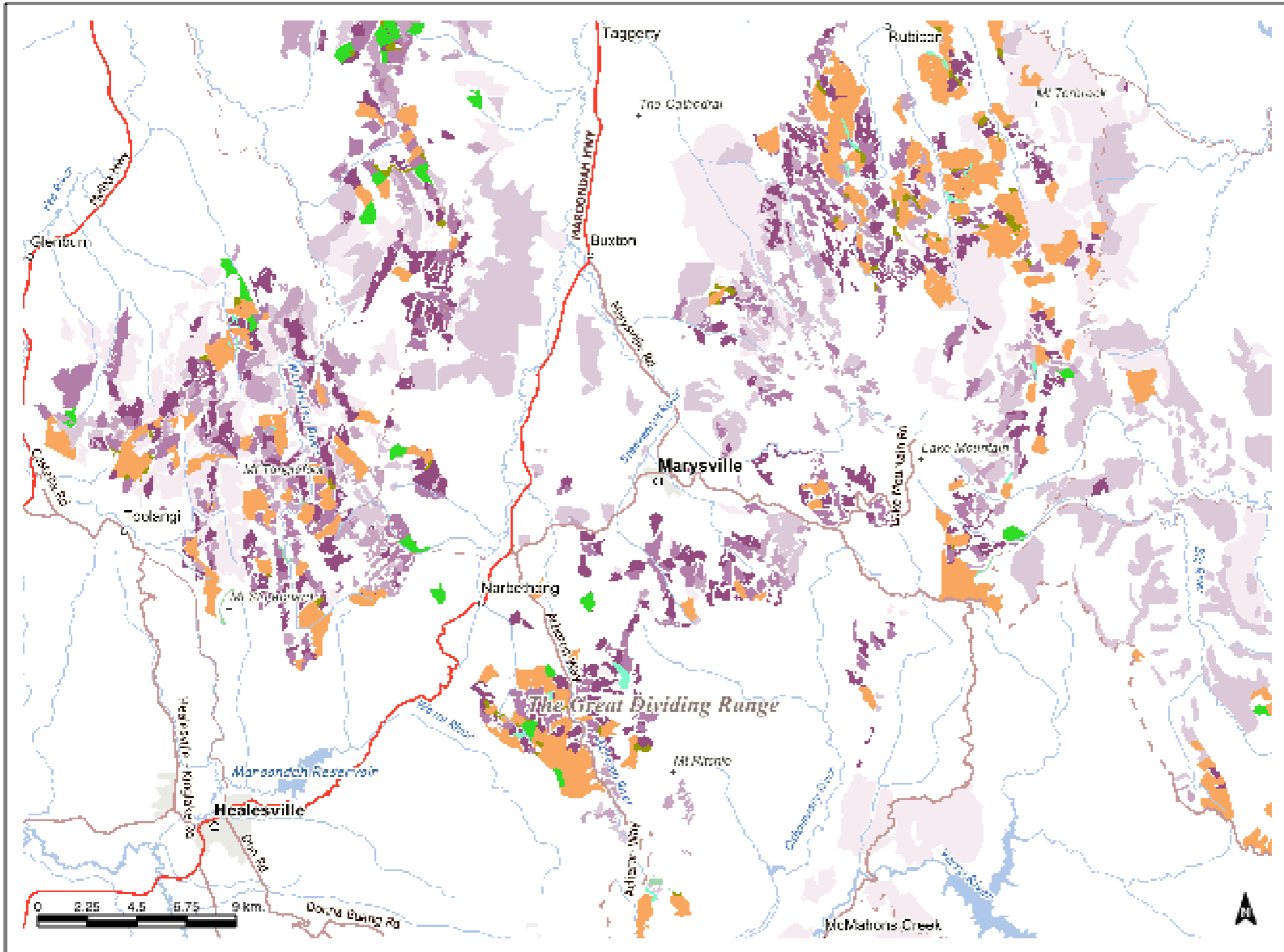
Forest Management Zones

- General Management Zone
- Special Management Zone
- Special Protection Zone
- Code of Forest Practice
- Other Public Land
- Conservation Parks and Reserves
- Other Parks and Reserves
- OPR - Limited Timber Harvesting
- Private
- Plantation
- Commonwealth Land
- Water Body

Base Map Features

- Minor Sealed Road
- Major Road
- Minor Unsealed Road
- Vehicular Track
- Main river or stream, coastline
- Towns
- Forest District Boundary
- Forest Block Boundary





TOPOGRAPHY

- Large Town
- Town

ROADS

- Footway
- Highway
- Main Road
- Secondary Road

WATERWAYS

- Major Watercourse
- Minor Watercourse

TERRAIN USE PLAN 2012-2014

- Greenfield
- Overfiling - Suburb
- Coastal usage score
- Shore (or Bay) Wetlands
- Road Alignment - Construction
- Road Alignment - Improvement
- Seed Tree Includes retained crooked
- Log storage facility
- Single Tree Retention
- Thinning from Above
- Thinning from Below
- Unmanaged

DECADE OF HARVEST

- 2000s
- 1990s
- 1980s
- 1970s
- pre-1970

WATERWAYS

- Perennial Waterhole
- Wetland Area

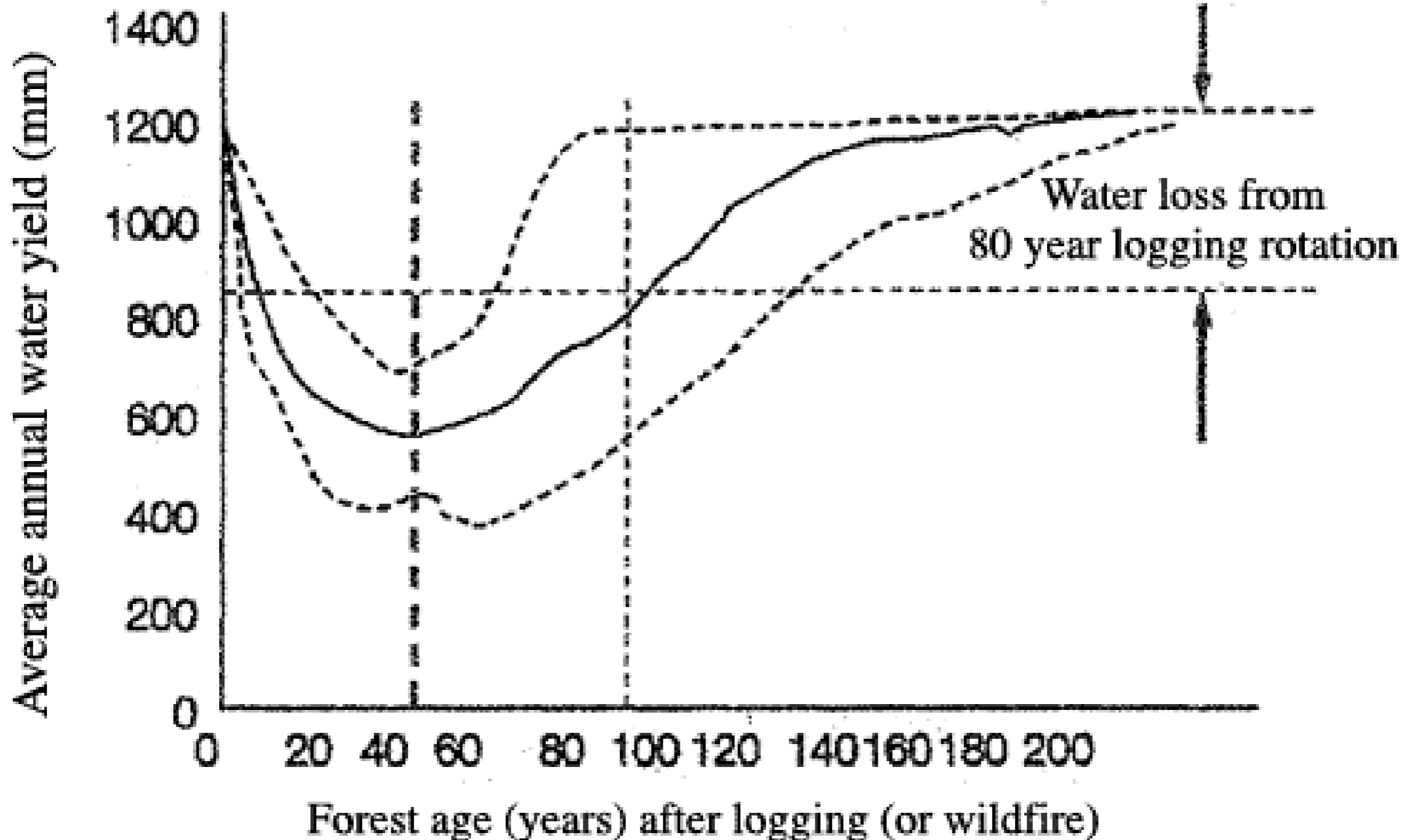
QUILT UP AREAS



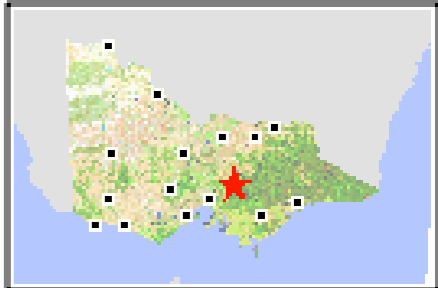
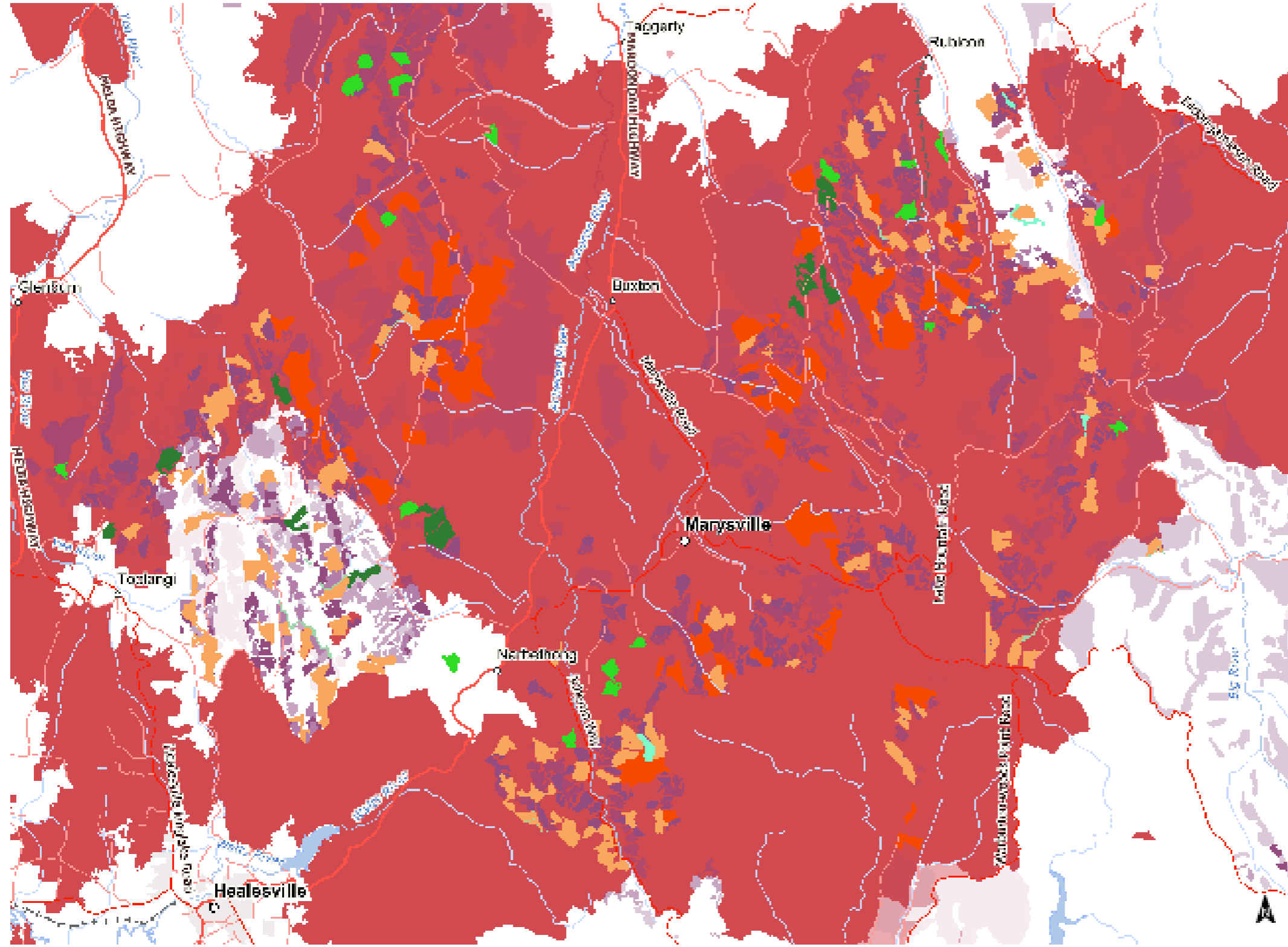
Disclaimer: This map is a snapshot generated from Victorian Government data. This material may be of assistance to you, but the State of Victoria does not guarantee that the publication is without flaw of any kind or is wholly appropriate for your particular purposes and therefore disclaims all liability for error, loss or damage which may arise from reliance upon it. All persons accessing this information should make appropriate enquiries to assess the currency of the data.

Kuczera Curve

Relationship between Mountain Ash Forest Age and Water Yield



It will take 150-200 years for water yields to return to their pre-logging state



* Refer to page 2 for legend details

Logging blow for irrigators

Leslie White

Weekly Times, July 26, 2012

IRRIGATORS are losing water due to native forest logging, according to an environmental lobby group.

And a key irrigation figure says the forestry industry's water take is "worse" for irrigation communities than government buy-backs "because there's zero compensation for it".

Research by the [Australian Conservation Foundation](#) into the Goulburn catchment found the river would lose 3,807,000 megalitres in the next century as the effort to regrow areas of logged native forest

News

Herald Sun

News

Study finds logging increased intensity of Black Saturday fires

- by: James Campbell
- From: Herald Sun
- August 03, 2014 8:39PM

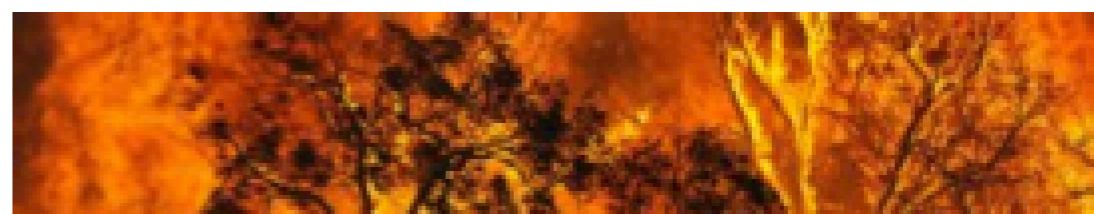


Logging can 'greatly increase' fire severity for 50 years, researchers say

774 ABC Melbourne

Posted Mon 4 Aug 2014, 1:24pm

Logging practices can "greatly increase the severity of fires" in extreme weather conditions





NATURE WALKS



SKIFIELDS

A stylized landscape illustration. On the left, a large tree with a white trunk and a dark, leafy canopy stands on a white ground. In the background, there are several layers of blue mountains, with the furthest ones being lighter in color. In the top left, a dark eagle is shown in flight against a light blue sky. The overall style is minimalist and graphic.

GREAT FOREST NATIONAL PARK



www.greatforestnationalpark.com.au