

# Great Eastern Ranges overall river health: The big picture

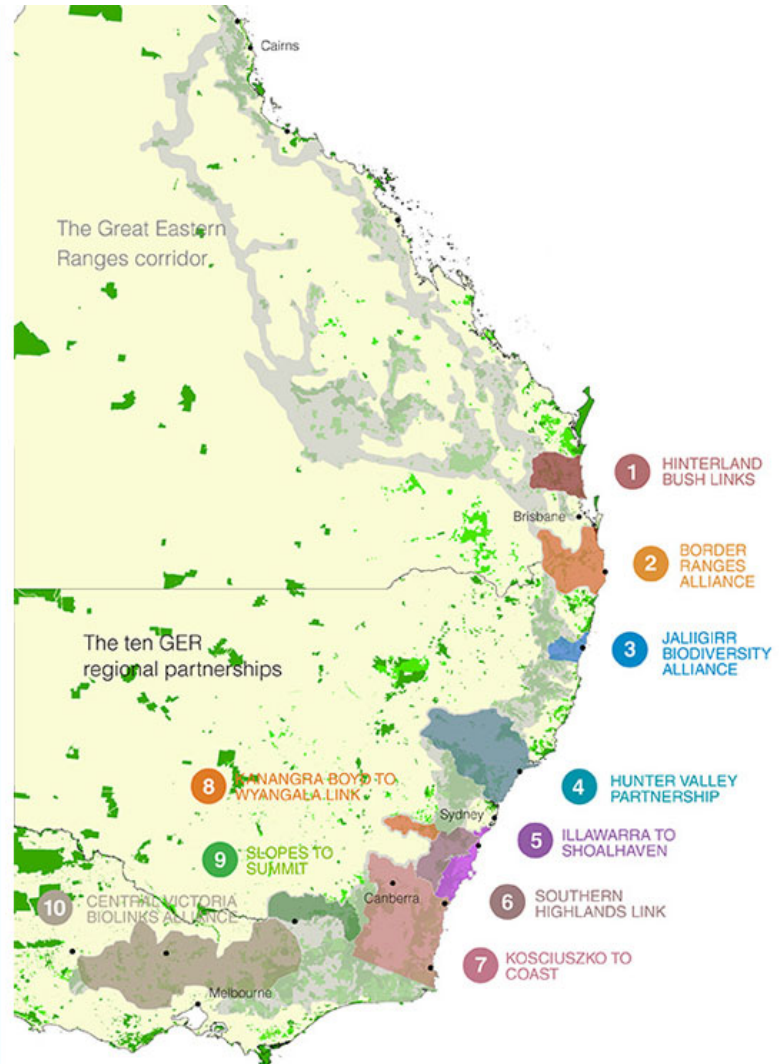
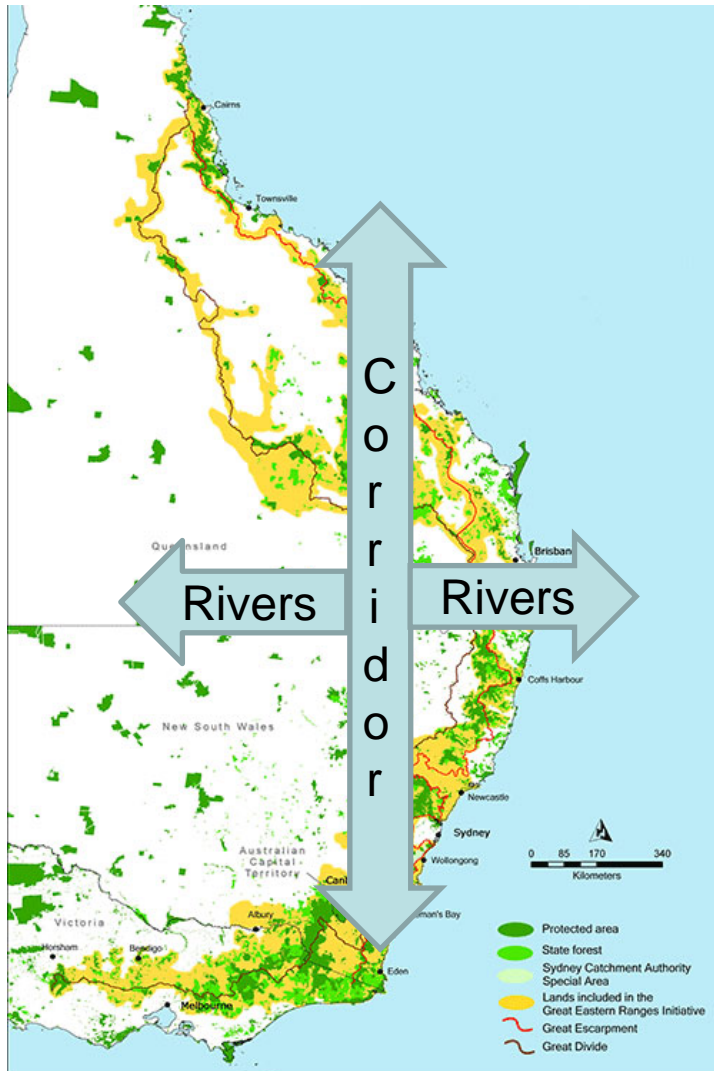
**Great Eastern Ranges - Connectivity of Water Services  
World Parks Congress, 17 November 2015**

Dr Jamie Pittock  
Fenner School of Environment & Society  
The Australian National University  
[jamie.pittock@anu.edu.au](mailto:jamie.pittock@anu.edu.au)

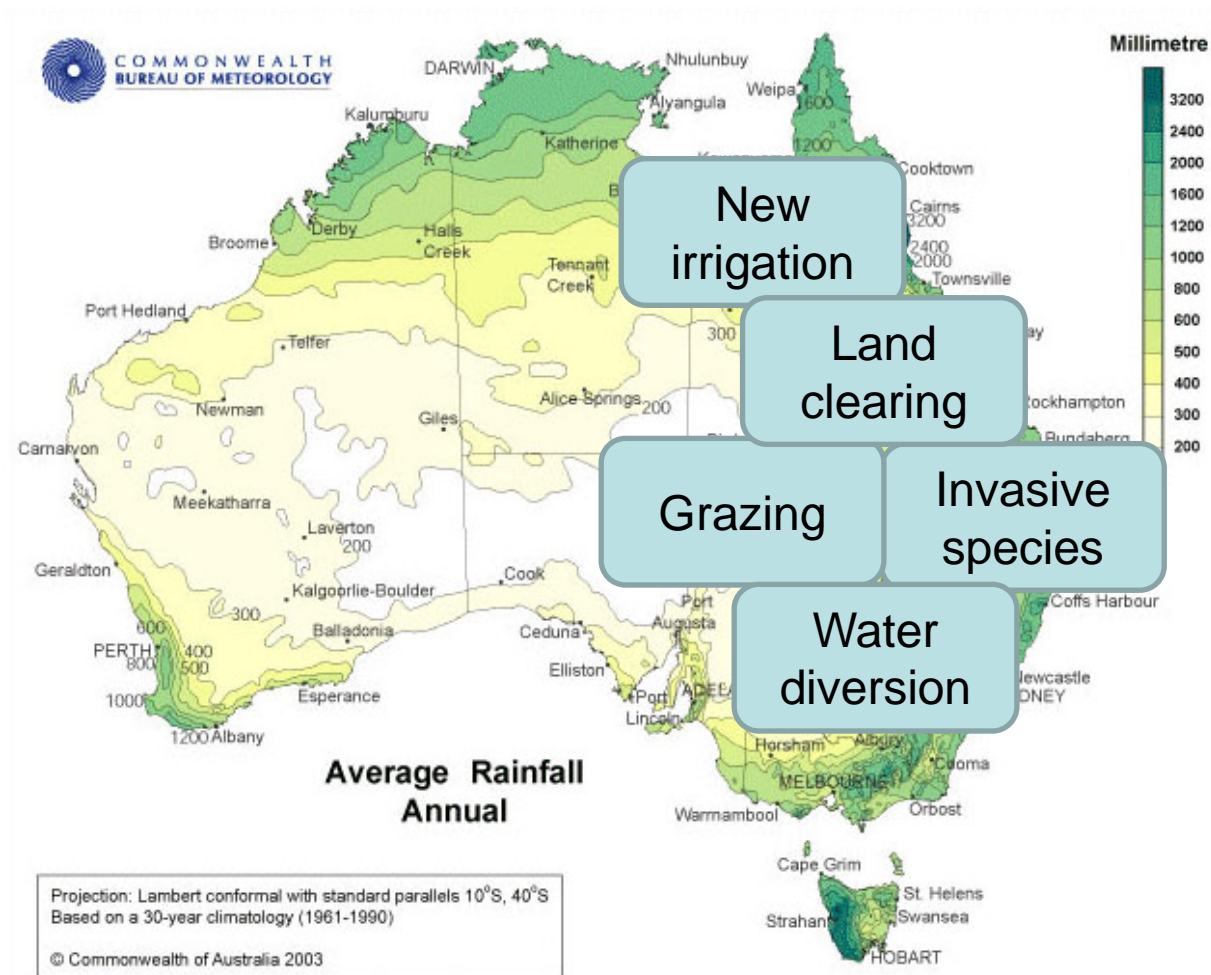
## Great Eastern Ranges and water

- “the area has 63 large rivers which provide clean **water** to over 11,000,000 people in the region”
- “it helps protect the **water** supply for three quarters of the population of Eastern Australia, essential for health, economic growth and significant nature based tourism”

# The Great Eastern Ranges corridor



# Rainfall and runoff



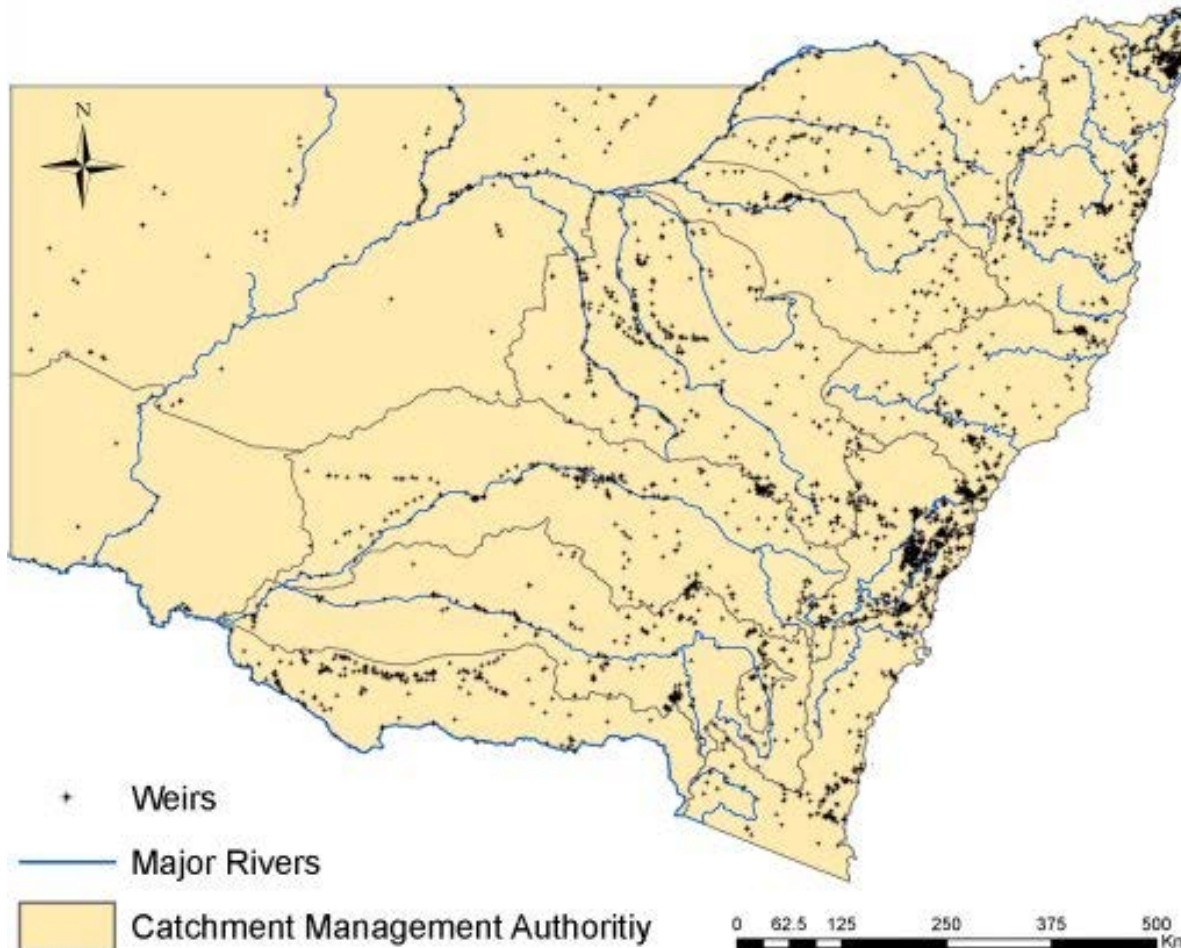


# Linking landscapes?



The Ovens River corridor is protected as a free-flowing “heritage river”, Australia.. © Jamie Pittock

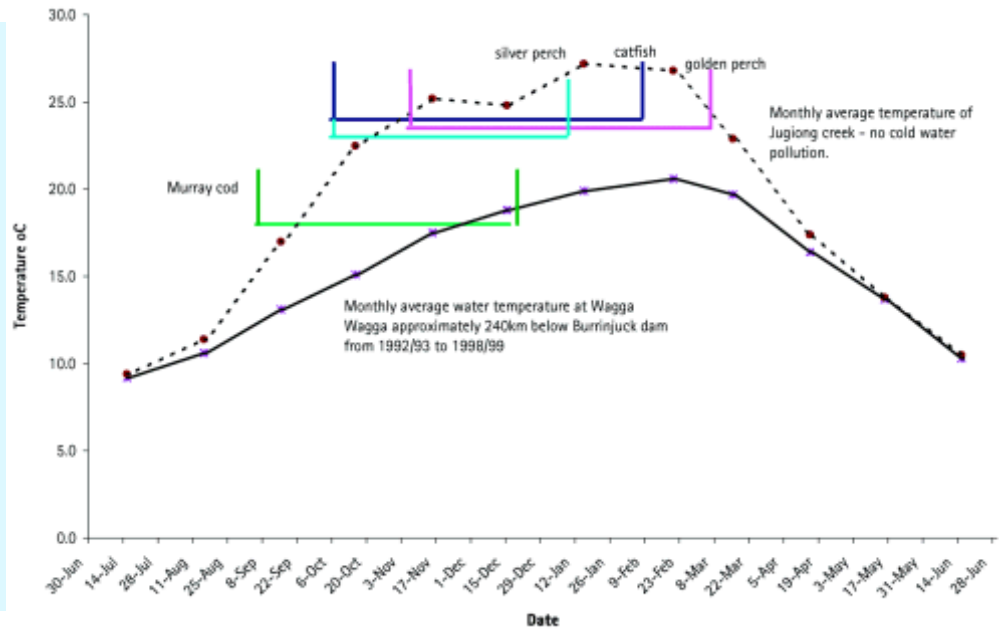
# Riverine connectivity



Weirs in  
NSW:  
4,000 weirs  
within the  
Murray  
Darling  
Basin  
alone.

Source: NSW Dept Primary  
Industries

# Water temperature and fish



## Water temperature and native fish breeding Burrinjuck Dam, NSW.

Source: NSW Fisheries



# Complementary conservation options

1. Appropriate environmental flows
2. Environmental works & measures
3. Control thermal pollution
4. Freshwater habitat connectivity
5. Restore riparian vegetation (GER?)
6. Conserve more resilient landscapes (GER?)
7. Conserve gaining reaches
8. Geomorphic restoration
9. Manage exotic species