

Boumba Bek/Nki National Parks in Cameroon: an illustration on conservation contradictions in the Congo Basin

14 November 2014

Boumba Bek and Nki National Parks

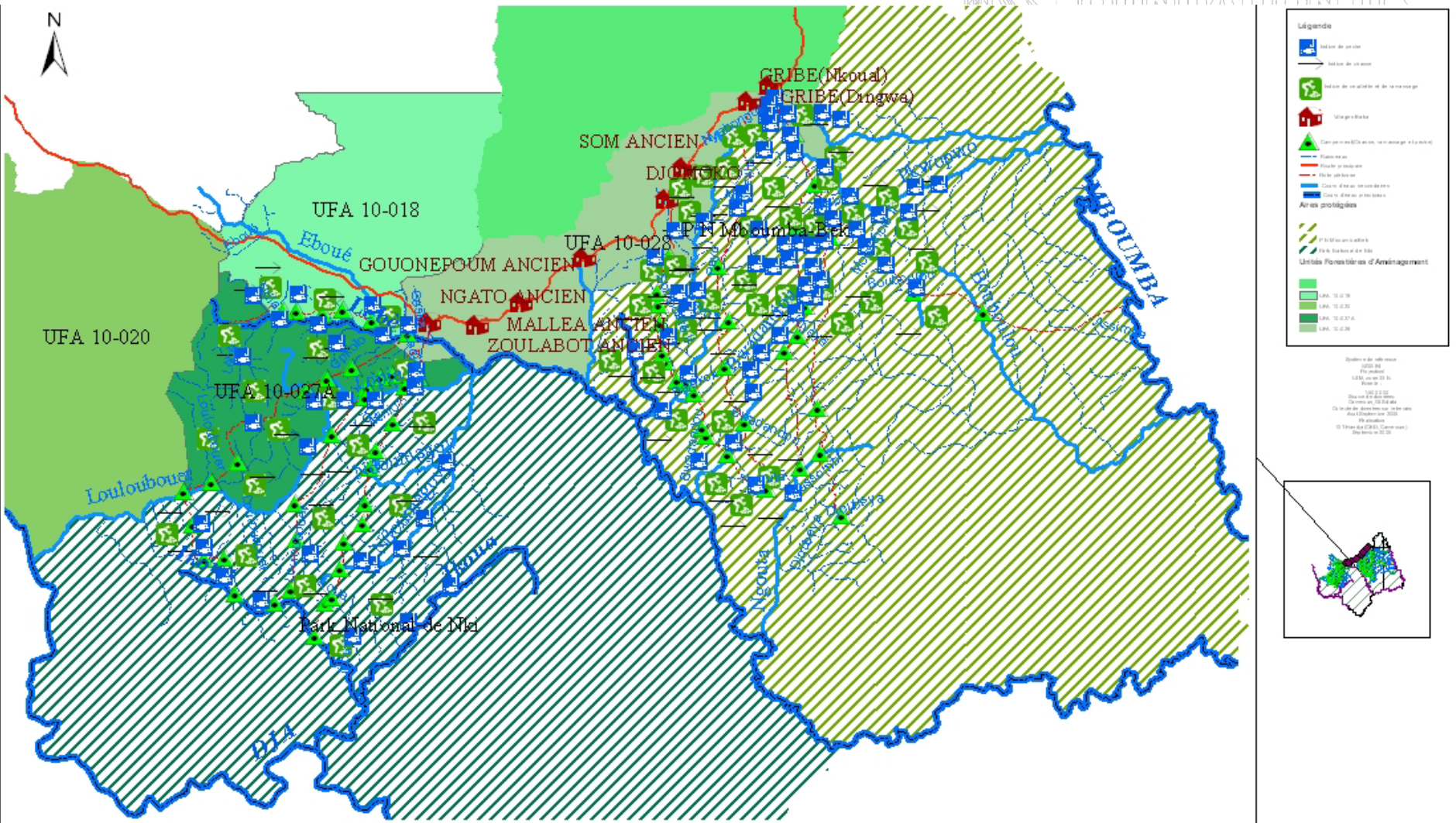


Established in 2005

**Part of TRIDOM
landscape**

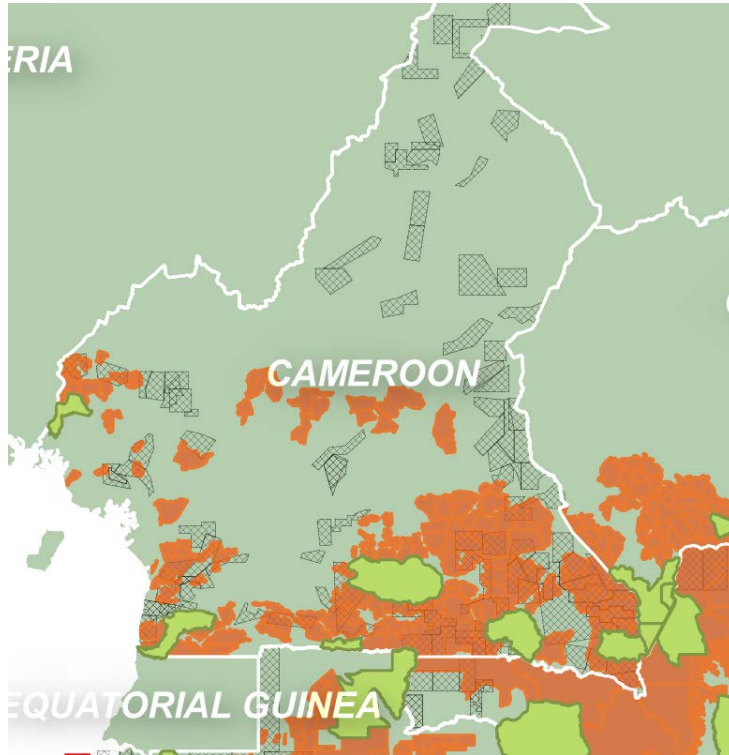
Almost 550,000 Ha

Community resource use



Contradictions

1. Conservation and extractive activities



- **7 logging concessions bordering the parks**
- **6 mining concessions overlapping the parks**

Contradictions

2. Human rights: commitments vs. reality

- **Lack of consultation, FPIC, participation and livelihoods**
- **Disregard of specificities of indigenous Baka from the outset**
- **Human rights violations**

Contradictions

3. Dependence and alienation

- **Unacknowledged knowledge**
- **Lack of involvement**
- **Required participation**

Motivations?

1. **Self preservation logic: preserving “parks” for themselves**
2. **“Symbolic offsetting” and the real drivers of land management**

Thank you!

