



IUCN
WORLD PARKS
CONGRESS
SYDNEY 2014

*Parks, people, planet:
inspiring solutions*

Wildlife-Livestock Integration: an innovative approach to conservation

Martin Mulama

OI Pejeta Conservancy, Kenya



Overview

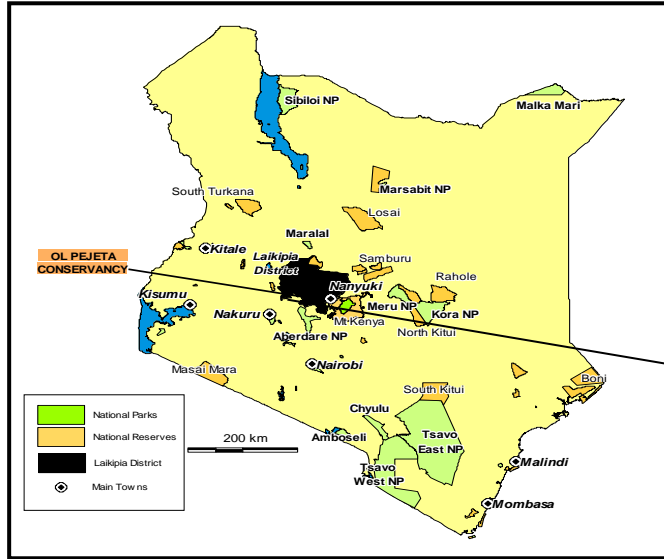


- Integrated wildlife-livestock system produces **greater overall benefits**
- **Greater income** is possible from both cattle and wildlife tourism together, resulting in the **most profitable land use** in non arable zones
- **Generates alternative revenue stream** for conservation



The Ol Pejeta Conservancy

Area: 36,422 Ha (90,000 acres) Fenced

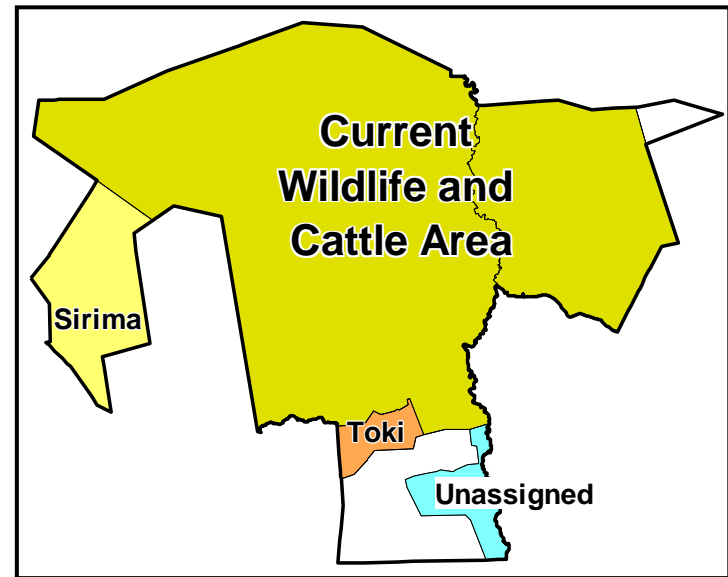
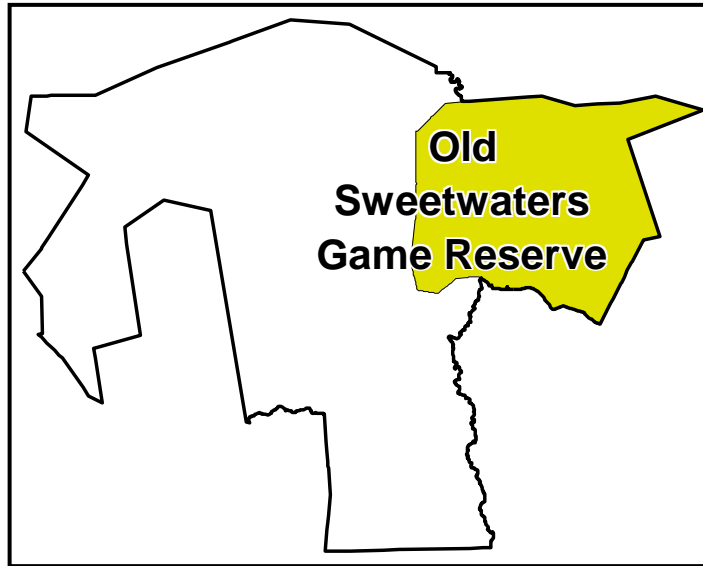


The Conservancy works to **conserve wildlife**, provide a **sanctuary for great apes** and to generate income through **wildlife tourism** and **complementary enterprise** for reinvestment in conservation and **community development**

Background and milestones : <2004>

- **1940s:** Ol Pejeta Ranch – **Extensive cattle ranching**
- **Wildlife not tolerated especially predators**

>2004: FFI, Arcus Foundation and Lewa established Ol Pejeta conservancy;
Sweetwaters Game Reserve **expanded**



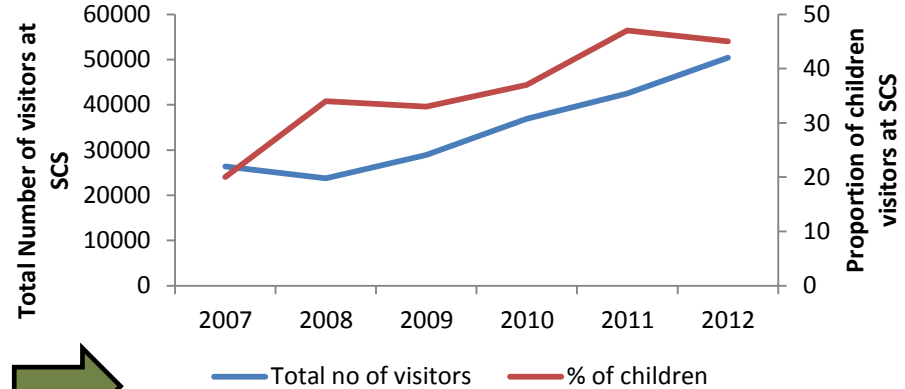
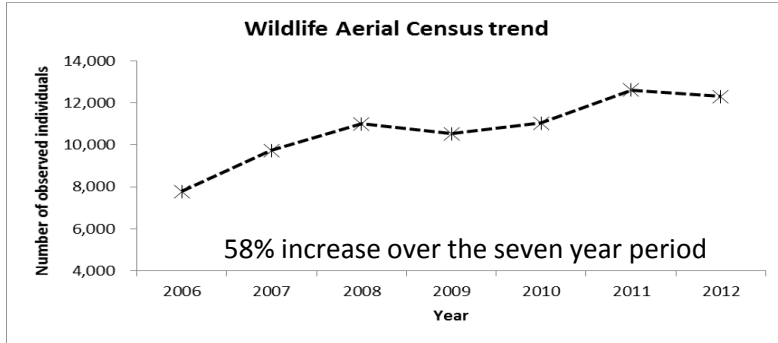
- **1988: Sweetwaters Game Reserve - 9,713 Ha (24,000 acres) rhino sanctuary established**

Wildlife-Livestock integration model

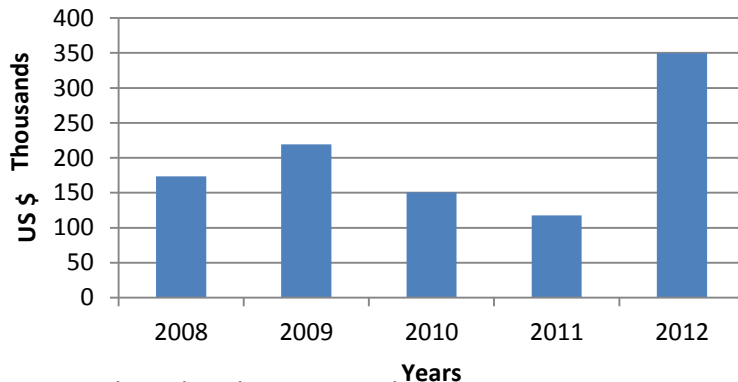
- **Economics** – cattle and wildlife together make **more money than “either or”**
- **Ecology** – nutrient rich “hotspots”, **removal of rank grass**, creation of a heterogeneous landscape
- **Socio-economics** - maximizing land productivity, create more employment thus taxable revenues to central government
- **Model for conservation** - in pastoral areas
- **Risk management** – **alternative revenue stream**



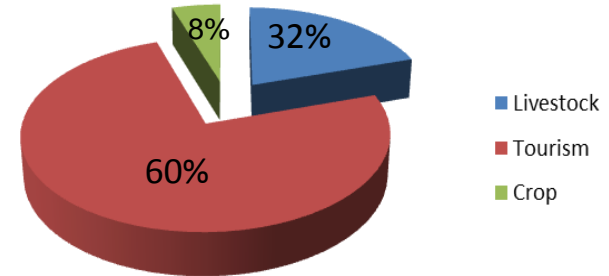
Key Results



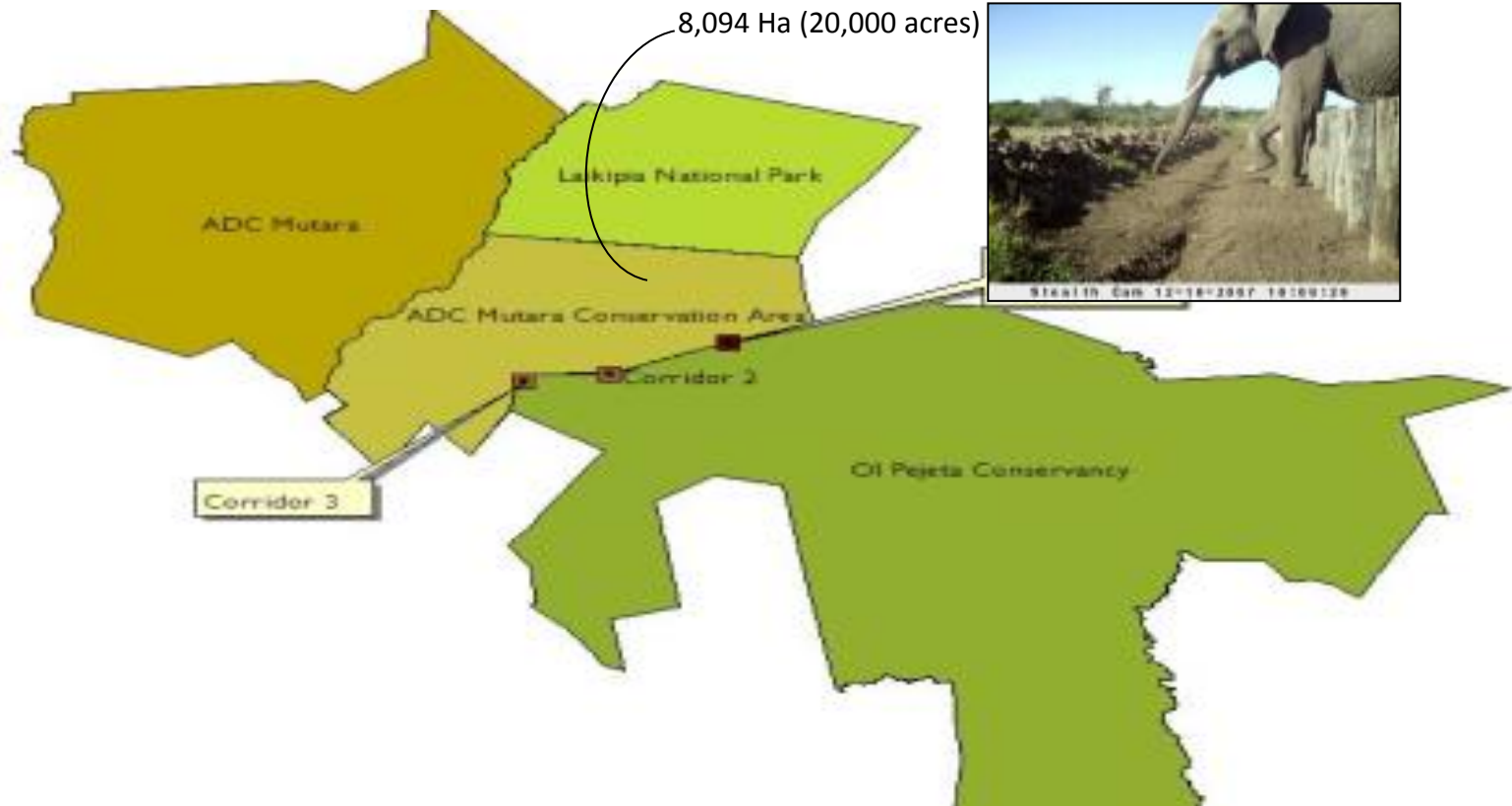
Social and enterprise support to neighbouring communities: 2008-2012



Developed and maintained community program



Securing more space for wildlife - Landscape approach



An inspiring solution?

Innovative and effective

- **Maximizing land productivity**, using cattle as **wildlife habitat management tool**, and creating **more employment** thus more taxable revenue

Evidence of implementation and impact

- Improved habitat contributed to **abundant and diverse wildlife**, increased **wildlife tourism**, more revenue thus **more social and enterprise support** to neighboring communities, resulting into **improved community relationship**

Applied elsewhere or more broadly

- Enabling the achievement of **wildlife conservation in pastoral areas** where current conservation models **require exclusion of livestock**

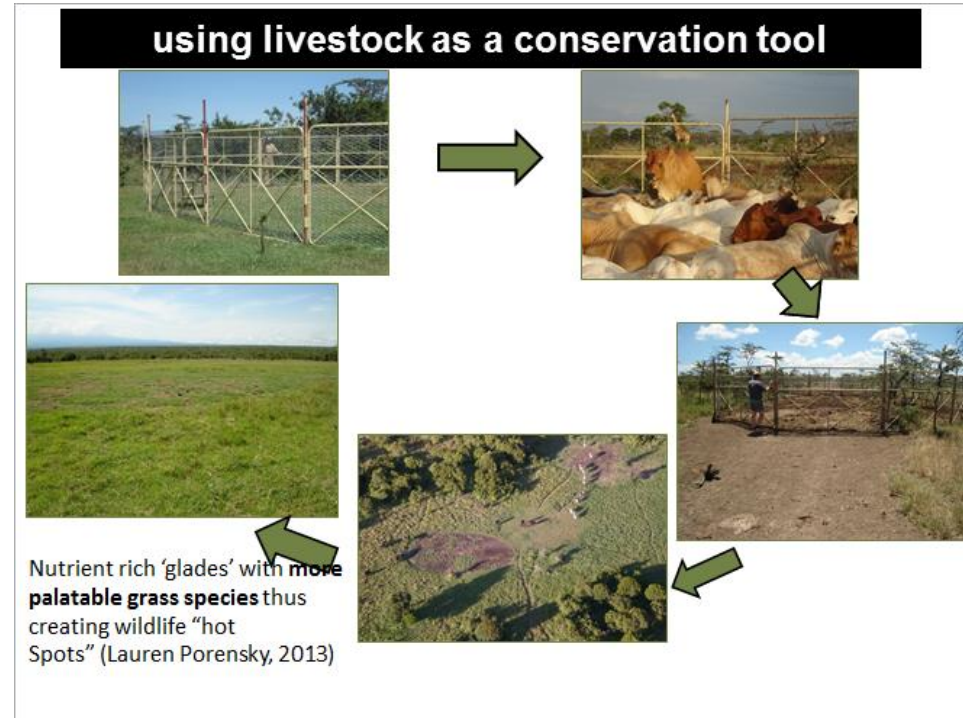
What makes it work?

Components that lead to success

- ability to use cattle as a **habitat management** tool,
- alternative revenue stream,
- support to communities including organized **access to graze** during drought
- Good community relationship

Enabling factors

- **innovative management team** and community support – emanating from a strong **Community Development Program**





A ROLE MODEL FOR CONSERVATION

Martin Mulama, Ol Pejeta Conservancy, Kenya

martin.mulama@olpejetaconservancy.org

Browse Martin's presentation on the congress touchscreens: Eposter n° ///

Rapid-fire presentation of his e-poster Monday 17th at 5:15pm, Screen n° 1