

Quality counts: Criteria and standards for large protected areas in Germany

Dr. Uwe Riecken

**German Federal Agency for Nature Conservation (BfN) Department on
Habitat Protection and Landscape Ecology, Bonn, Germany**



Two new national parks for Germany

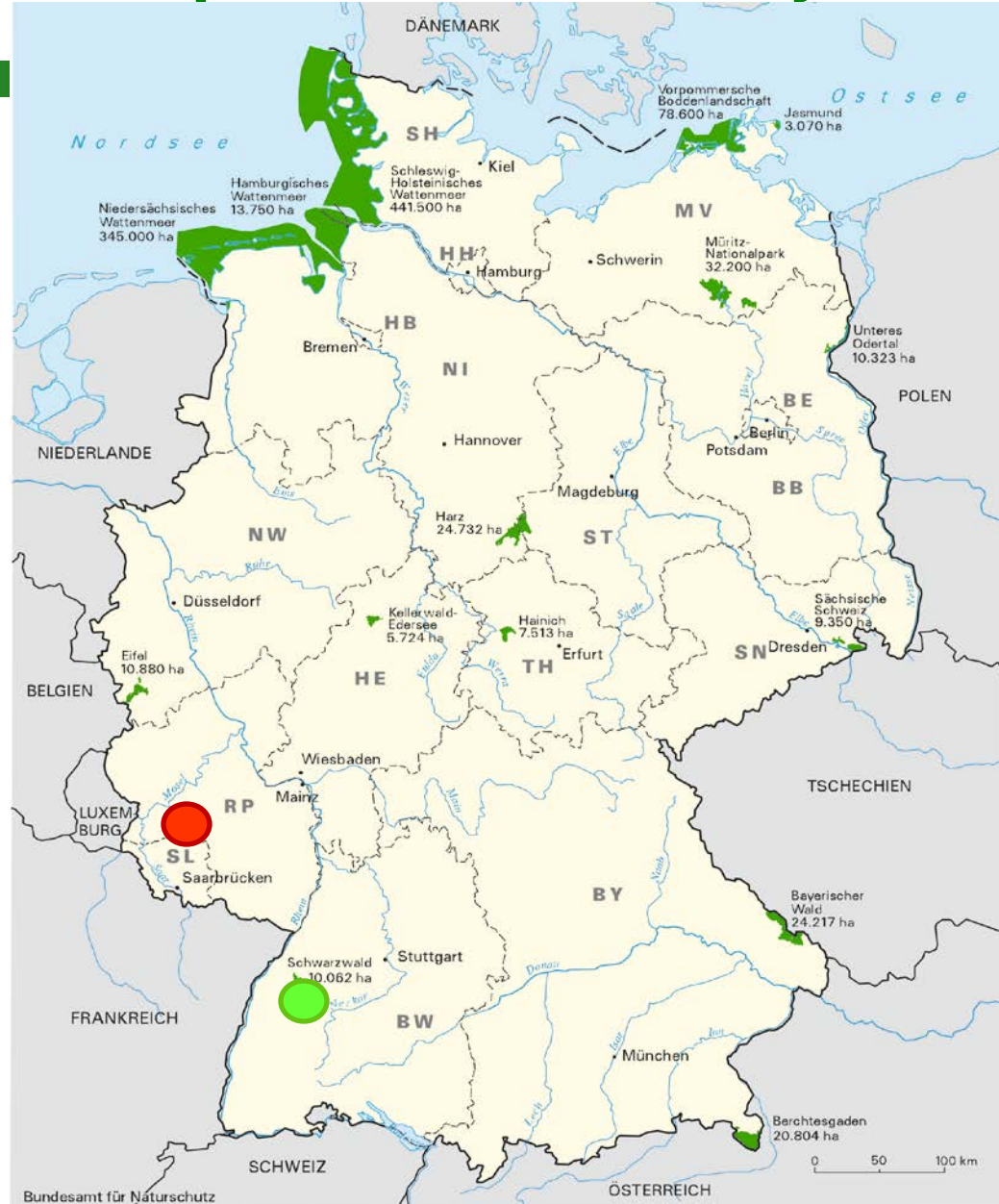
- 14 National parks in Germany (situation Jan. 2014) (= 0.6 % terr. surface)
- Schwarzwald (2014)
- Hunsrück/Hochwald (2015)

German Federal government:

- no responsibility for implementation

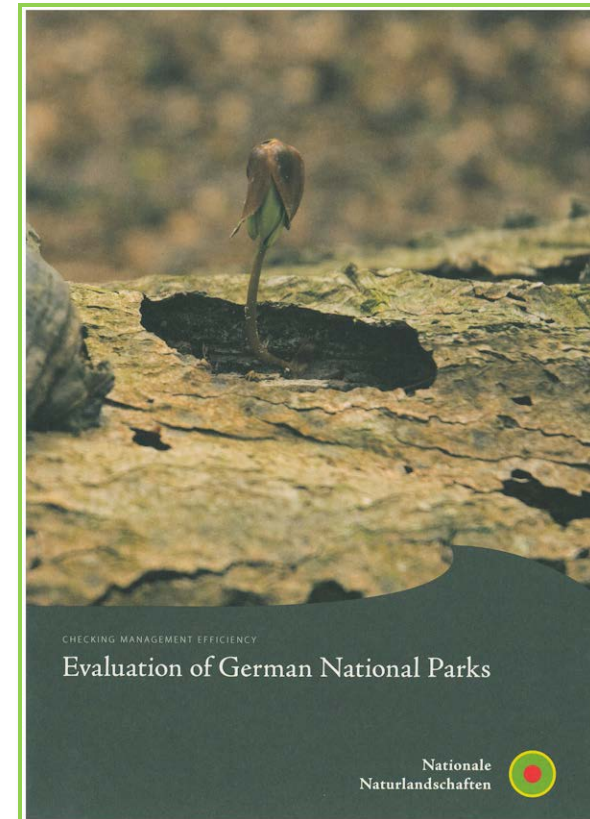
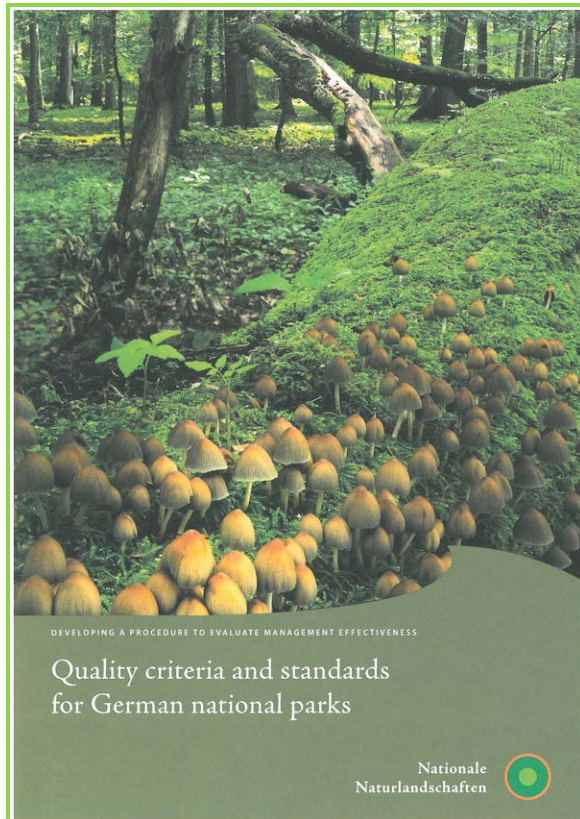
but

- strong consultation process



Set of standards and criteria to be applied:

- German Federal Nature Conservation Act (2009)
- 44 quality criteria in 10 fields of action (EUROPARC Germany 2008), e.g.:



Implementation

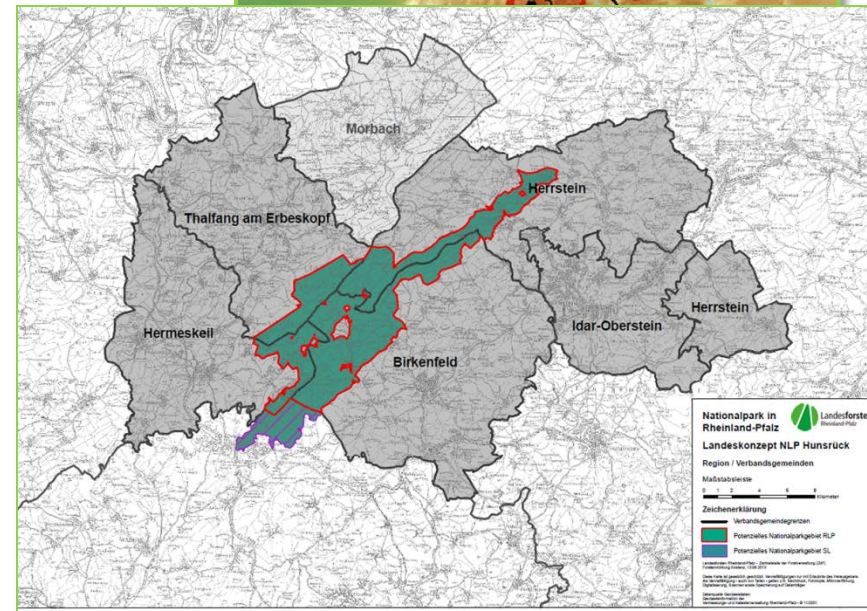
➤ National Park **Schwarzwald**:

- Federal state: Baden-Württemberg
- Start: 1.1.2014
- Area: 10.062 ha
- Core area now: 33 %
- Core area 2044: > 75 %
- Administration: 89 staff



➤ National Park **Hunsrück-Hochwald**:

- Federal state: Rheinland-Pfalz / Saarland
- Start: 1.1.2015
- Area: 10.061 ha
- Core area now: 25 %
- Core area 2044: > 75 %
- Administration: 53 staff



Lessons learnt

- It is possible to implement new national parks even in an industrialized country like Germany.
- The combination of legal obligations and broadly accepted quality criteria help to increase quality of the new parks.
- The application of these criteria through an evaluation process will also help to enhance quality of existing parks.
- Please refer to:
 - <http://www.europarc-deutschland.de/service/veroeffentlichungen>
 - http://www.bfn.de/0308_gebietsschutz+M52087573ab0.html



Thank you very much for your attention!

Dr. Uwe Riecken

**German Federal Agency for Nature Conservation (BfN) Department on
Habitat Protection and Landscape Ecology, Bonn, Germany**

